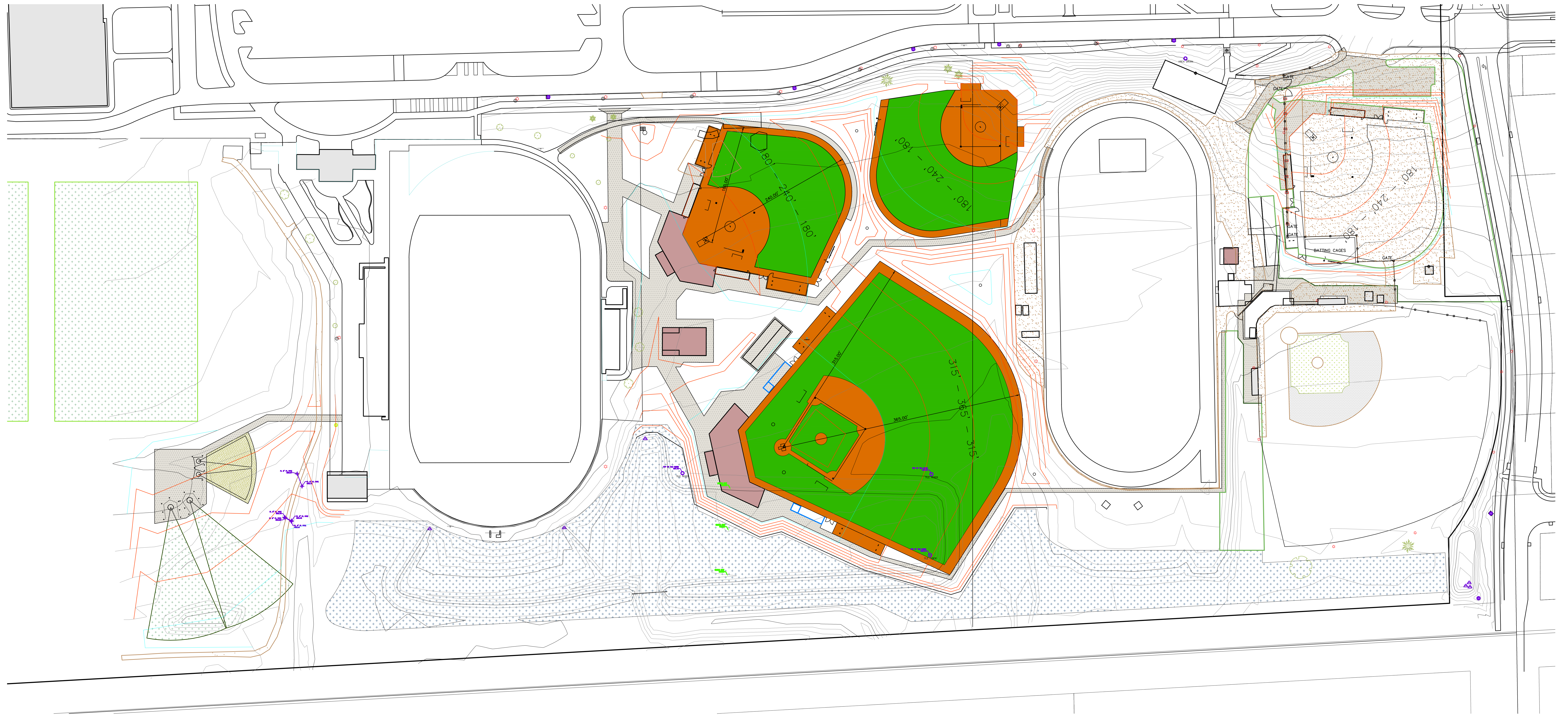
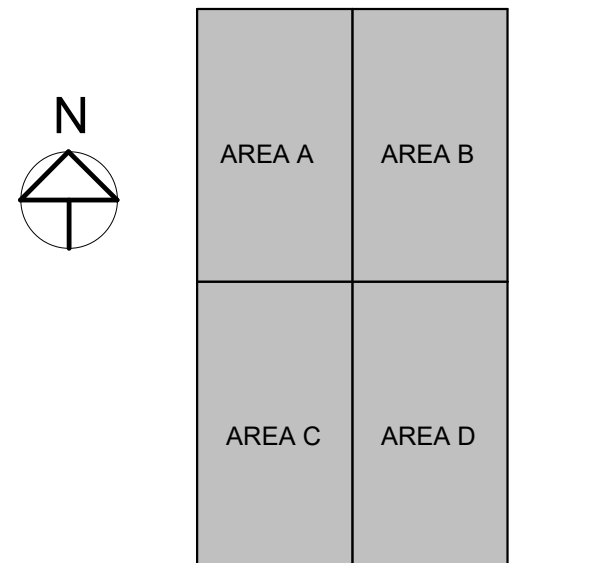


CCACSD BASEBALL & SOFTBALL COMPLEX



CCACSD BASEBALL & SOFTBALL COMPLEX





KEY PLAN
CLEAR CREEK AMANA BASEBALL - SOFTBALL ATHLETIC COMPLEX IMPROVEMENTS

551 W MARENGO ROAD
 TIFFIN, IA 52340

ISSUANCE

100% DESIGN DEVELOPMENT
 03/15/2023

REVISIONS

REVISIONS

REVISIONS

REVISIONS

REVISIONS

REVISIONS

REVISIONS

REVISIONS

REVISIONS

REVISIONS

REVISIONS

REVISIONS

REVISIONS

REVISIONS

REVISIONS

REVISIONS

REVISIONS

REVISIONS

REVISIONS

REVISIONS

REVISIONS

REVISIONS

REVISIONS

REVISIONS

REVISIONS

REVISIONS

REVISIONS

REVISIONS

REVISIONS

REVISIONS

REVISIONS

REVISIONS

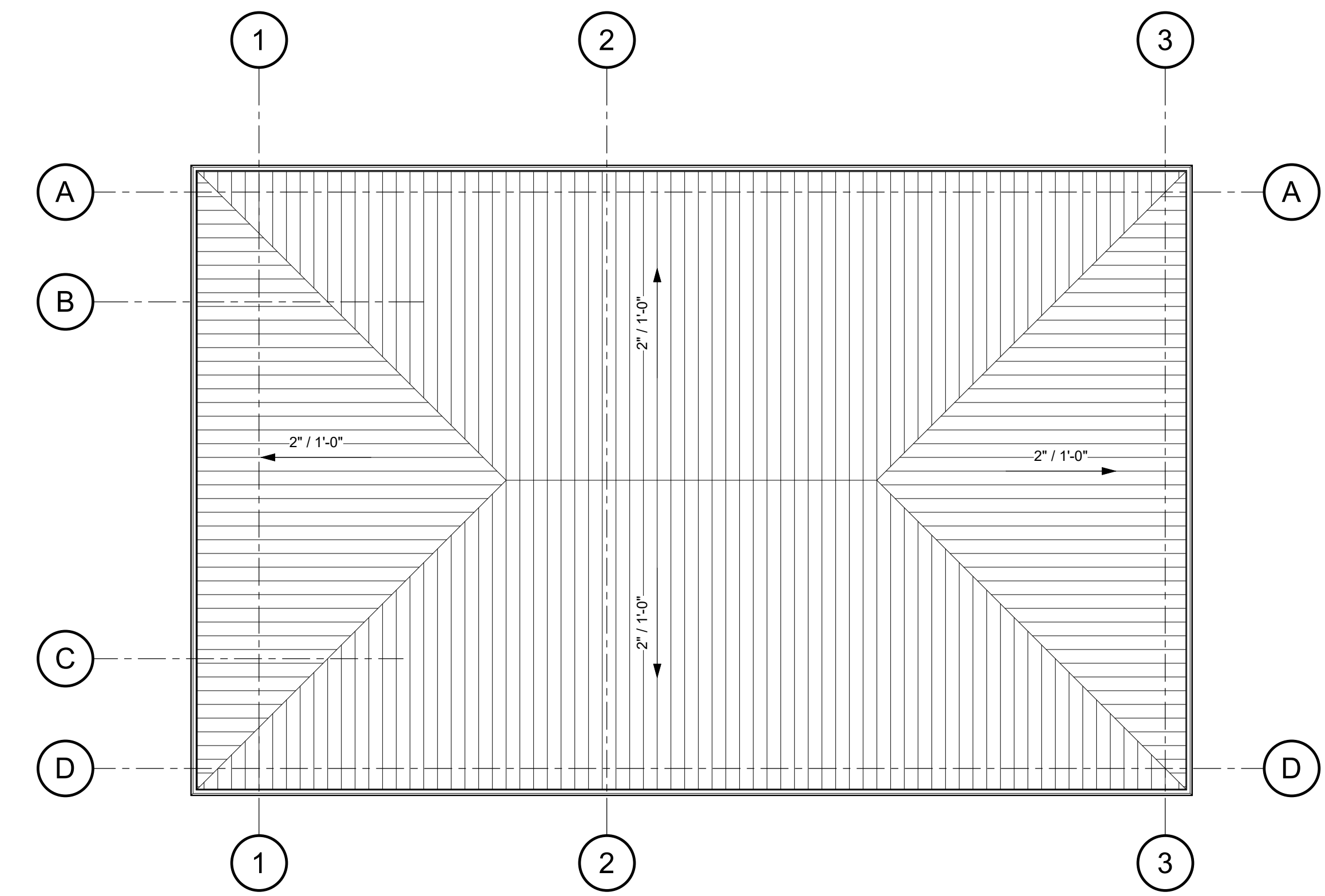
REVISIONS

REVISIONS

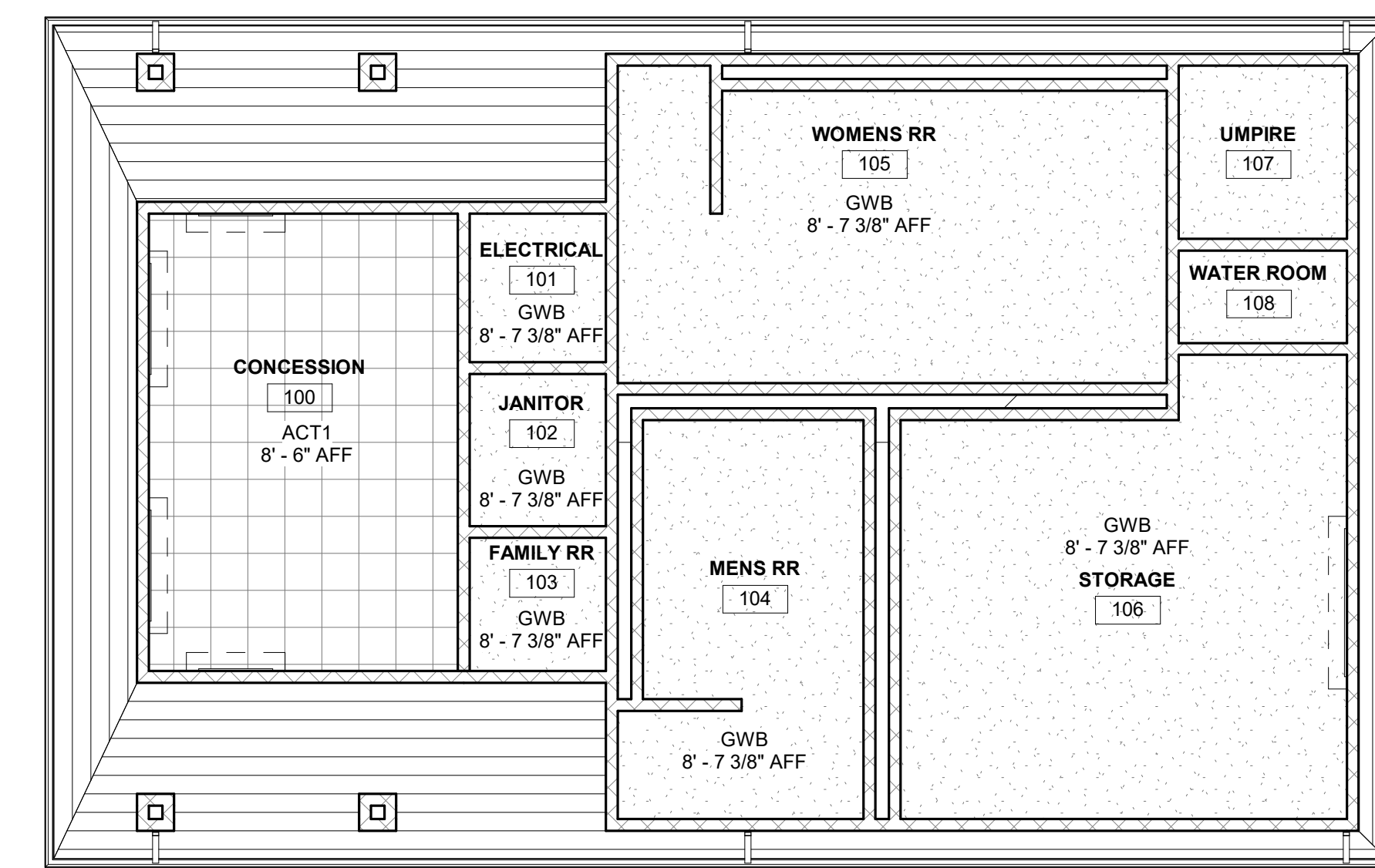
REVISIONS

REVISIONS

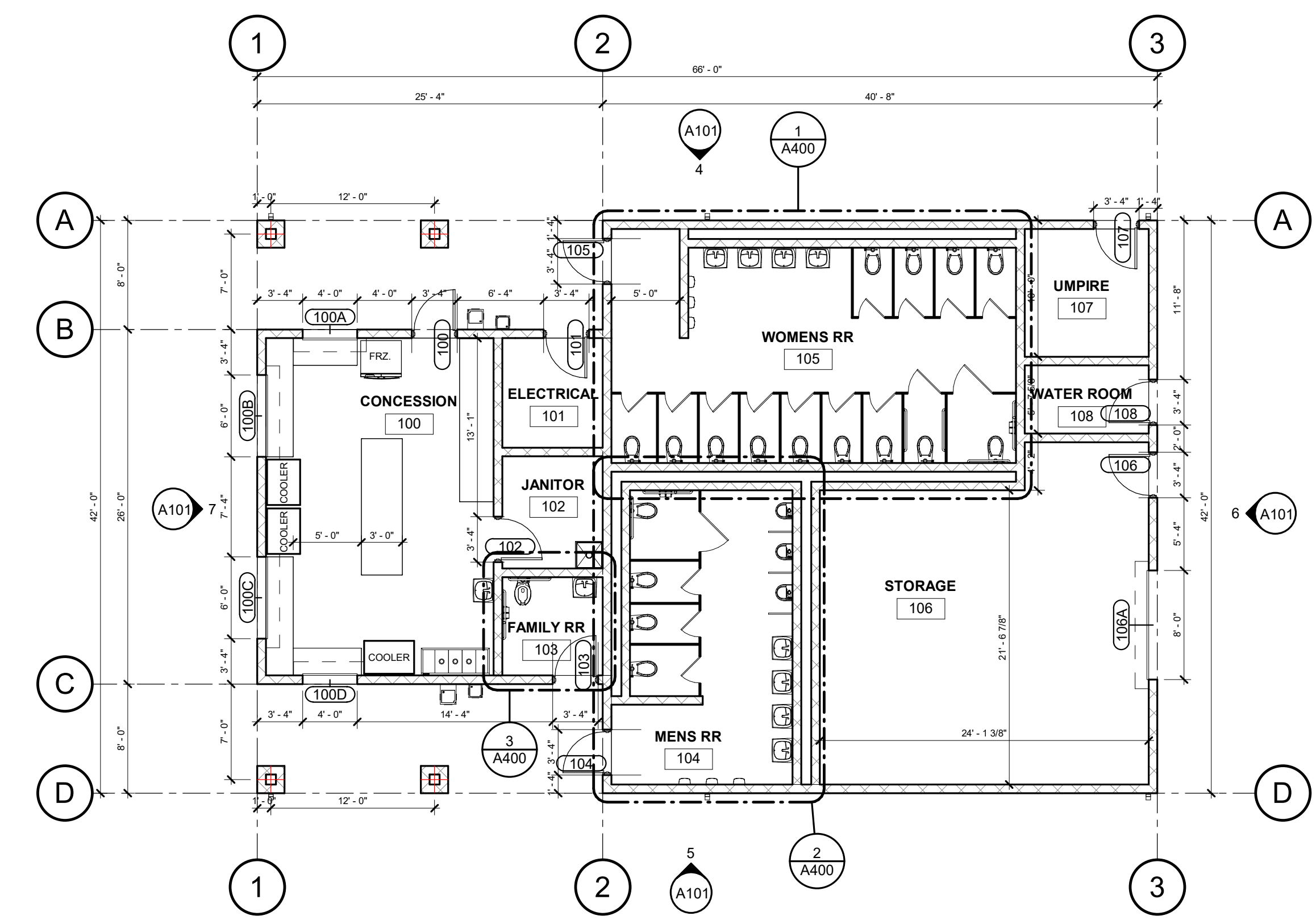
REVISIONS



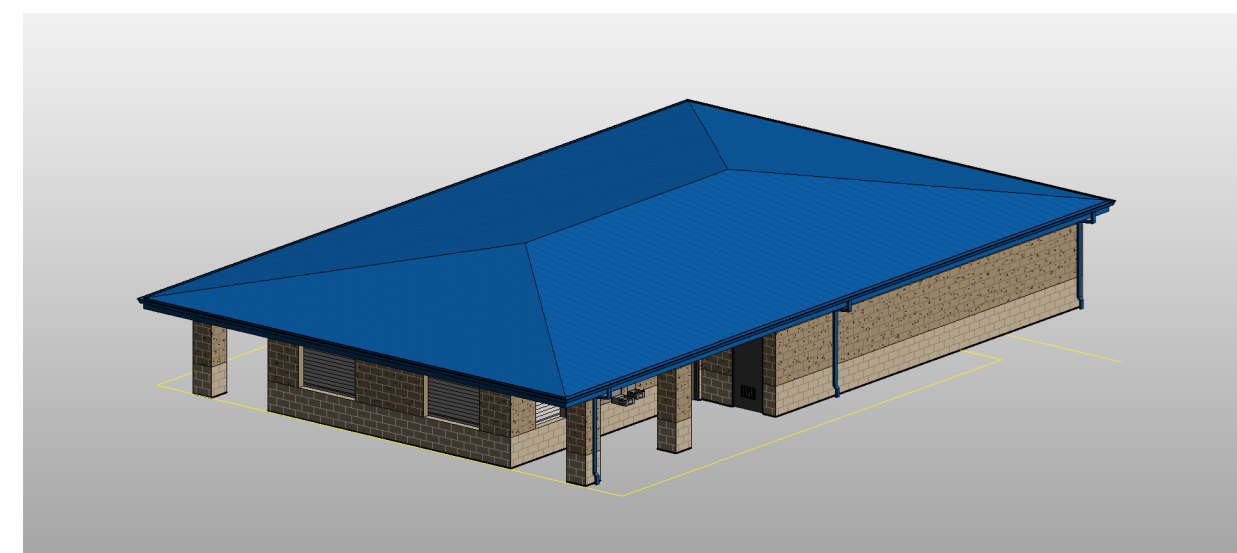
3 CONCESSION BUILDING ROOF PLAN
 SCALE: 1/8" = 1'-0"



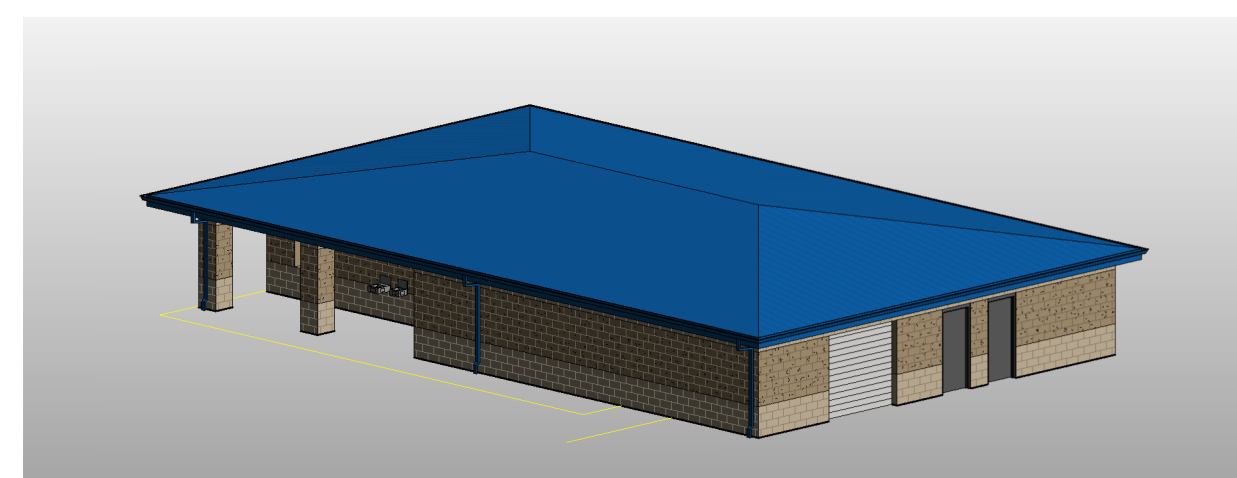
2 CONCESSIONS - REFLECTED CEILING PLAN
 SCALE: 1/8" = 1'-0"



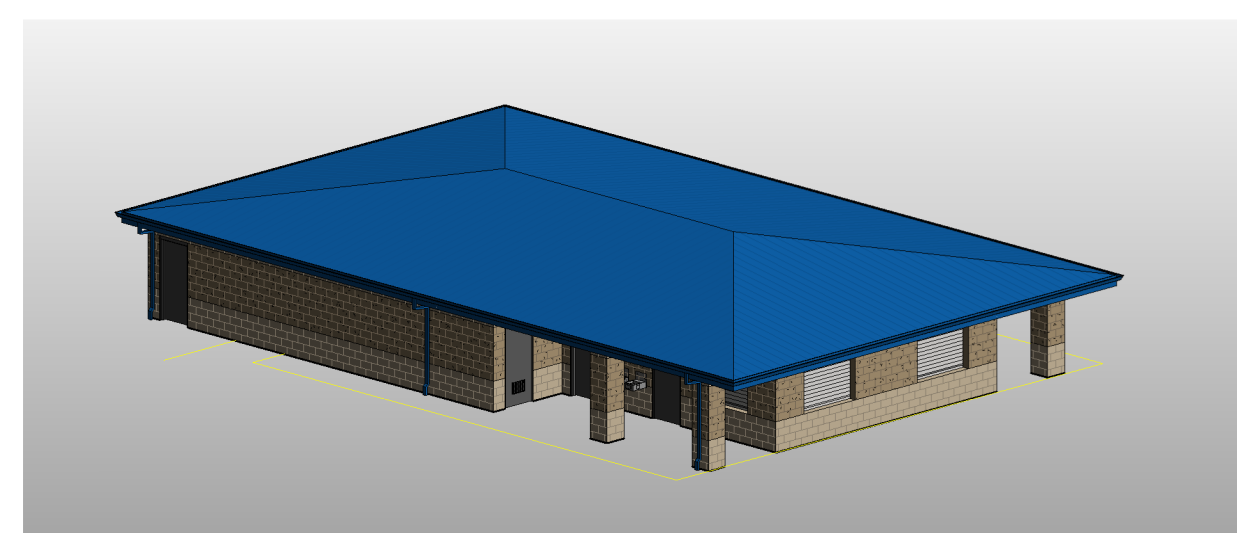
1 CONCESSION BUILDING FLOOR PLAN
 SCALE: 1/8" = 1'-0"



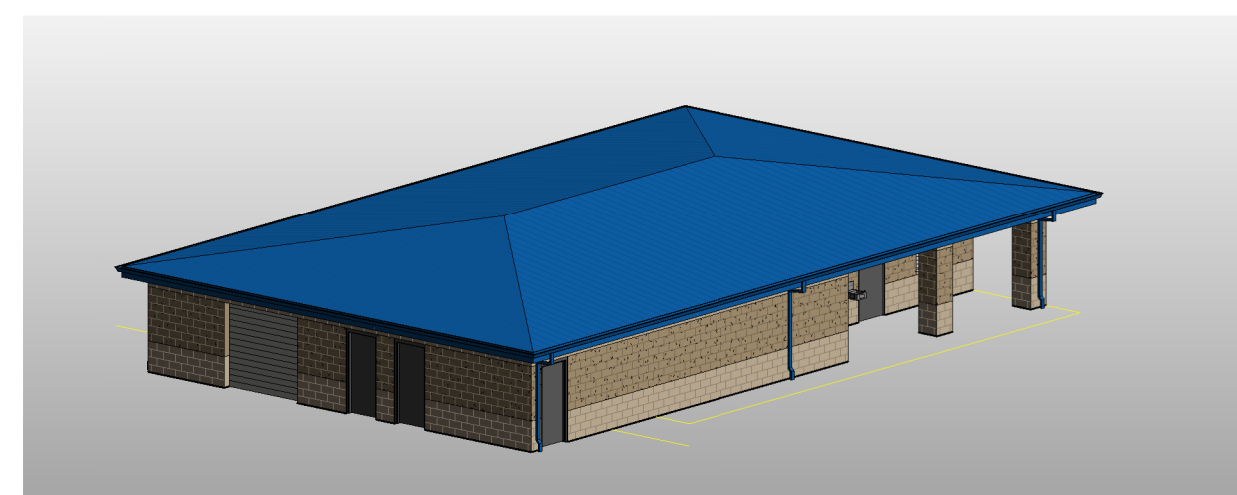
11 CONCESSION 3D SOUTHWEST
 SCALE:



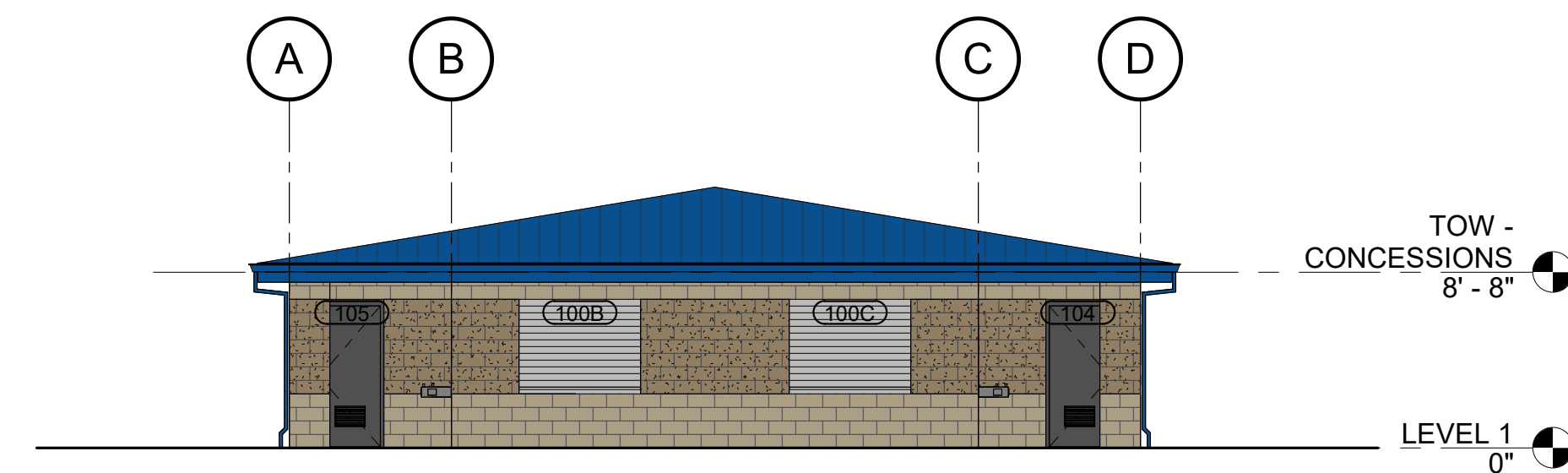
10 CONCESSION 3D SOUTHEAST
 SCALE:



9 CONCESSION 3D NORTHWEST
 SCALE:



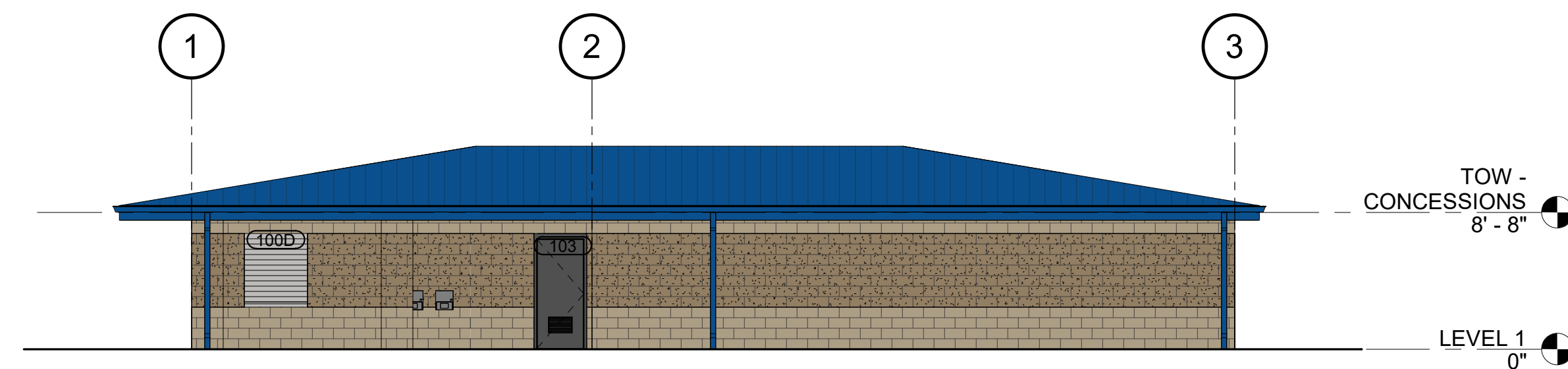
8 CONCESSION 3D NORTHEAST
 SCALE:



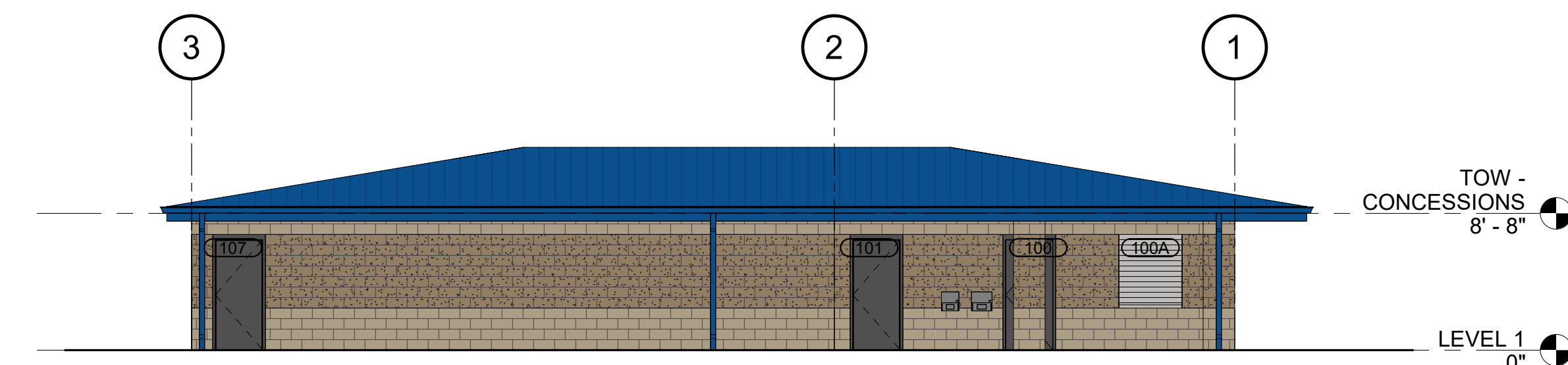
7 CONCESSION WEST ELEVATION
 SCALE: 1/8" = 1'-0"



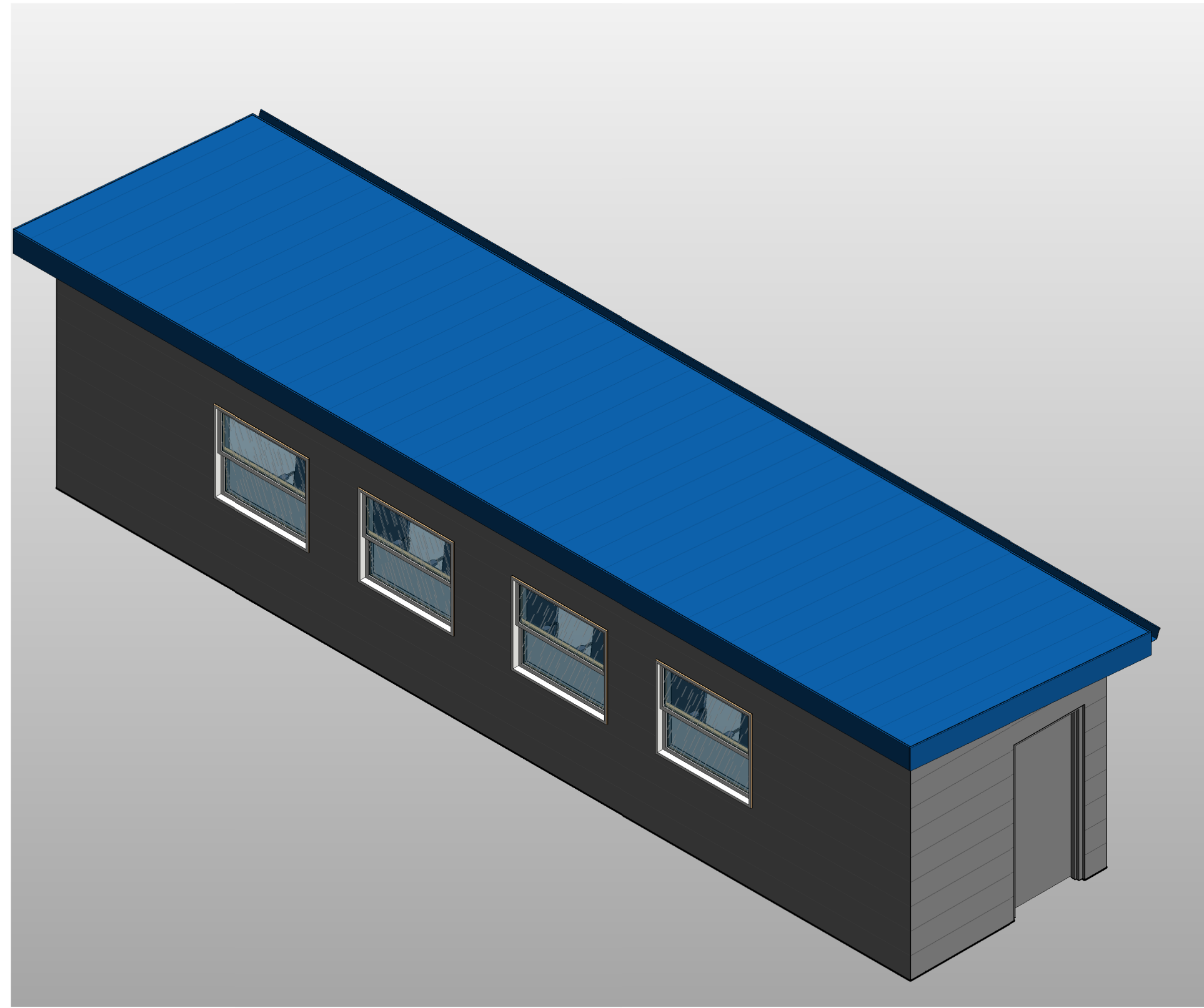
6 CONCESSION EAST ELEVATION
 SCALE: 1/8" = 1'-0"



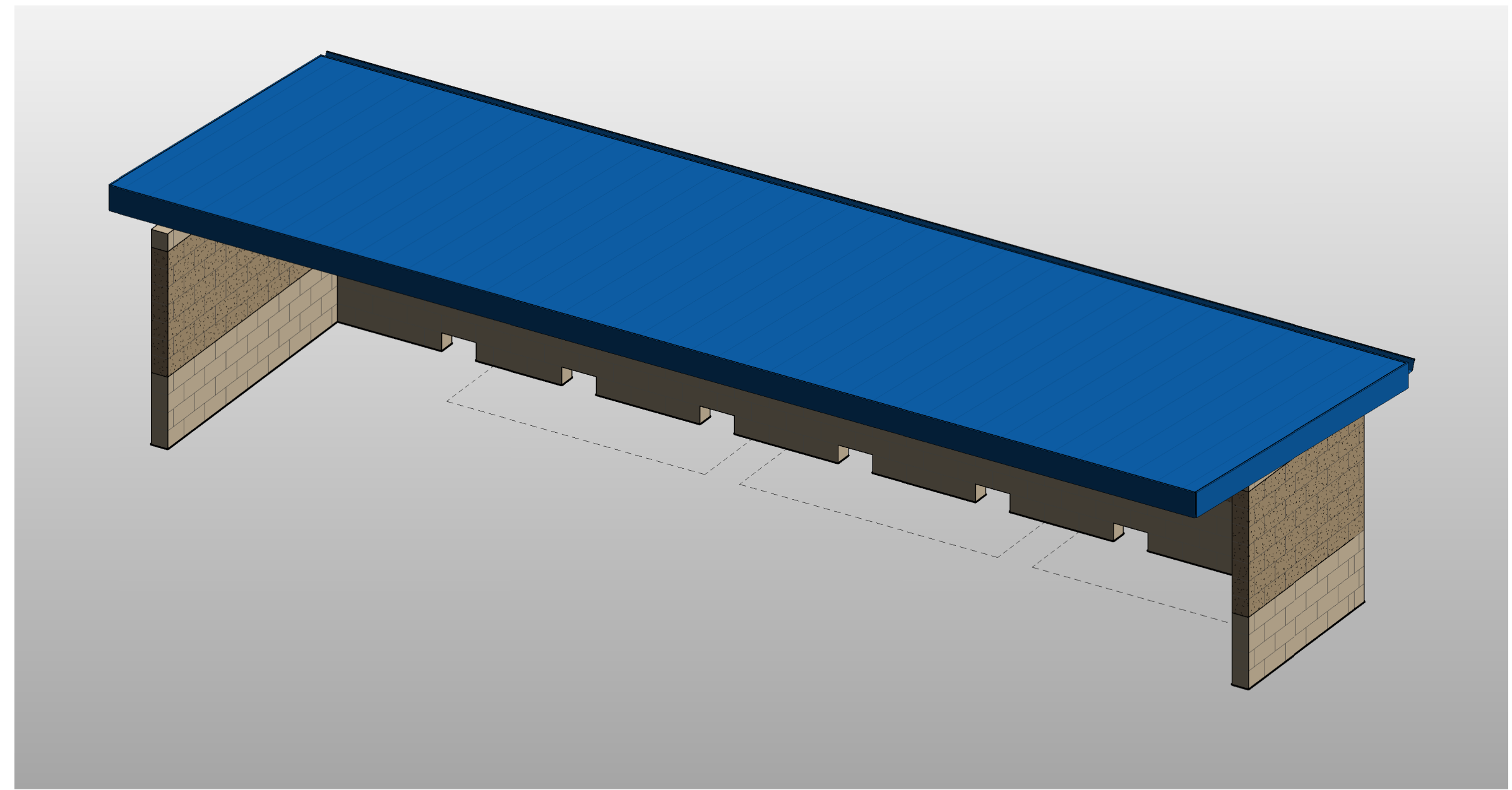
5 CONCESSION SOUTH ELEVATION
 SCALE: 1/8" = 1'-0"



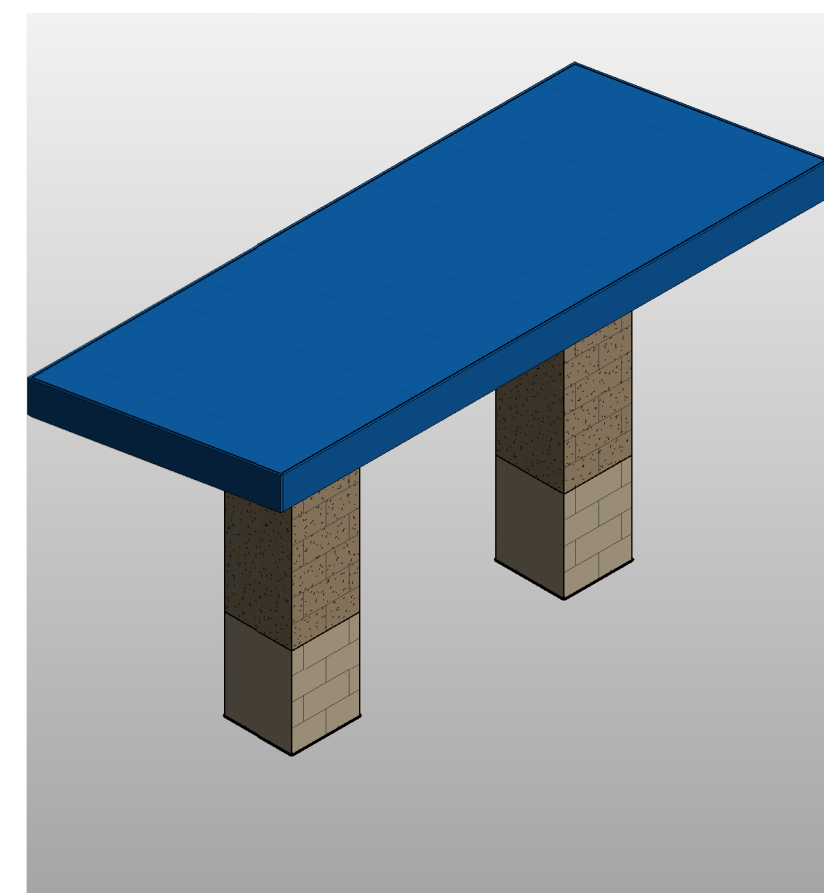
4 CONCESSION NORTH ELEVATION
 SCALE: 1/8" = 1'-0"



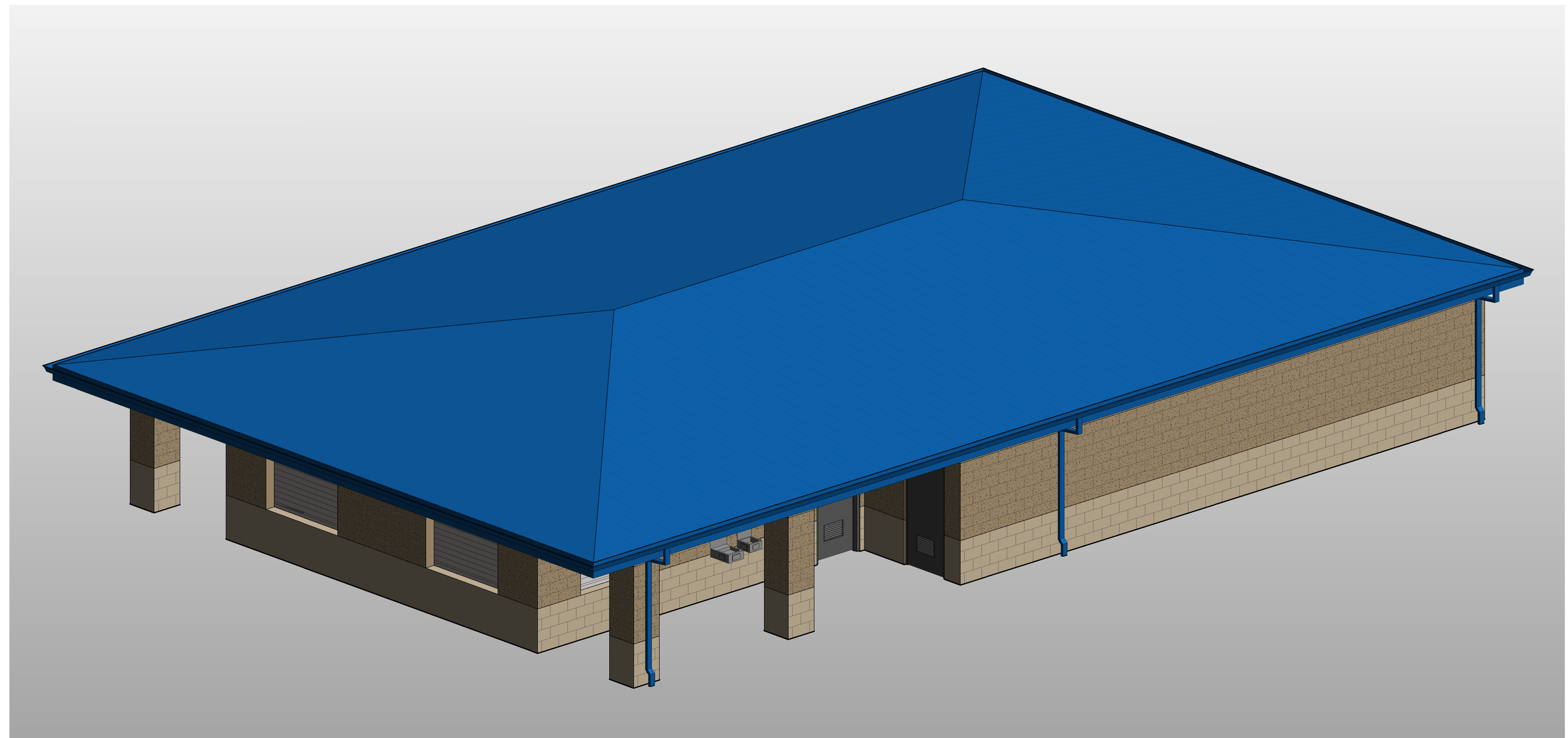
4 3D - PRESSBOX
SCALE:



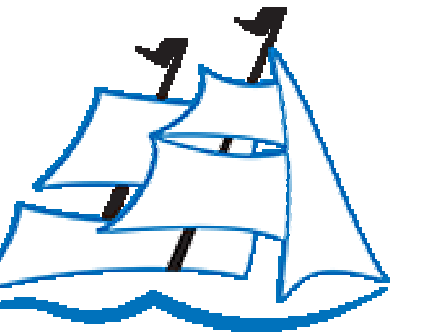
2 3D - DUGOUTS
SCALE:



3 3D - TICKET BOOTH
SCALE:



1 3D - CONCESSIONS
SCALE:



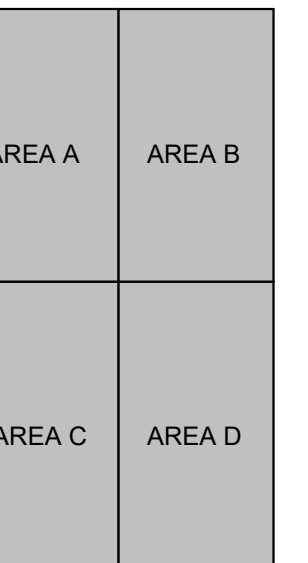
RE RAKER RHODES
Engineering



DESIGN ENGINEERS



MMS Consultants, Inc.



KEY PLAN

CLEAR CREEK AMANA BASEBALL - SOFTBALL ATHLETIC COMPLEX IMPROVEMENTS

551 W MARENGO ROAD
TIFFIN, IA 52340

ISSUANCE

100% DESIGN DEVELOPMENT
03/15/2023

REVISIONS

NO.	DATE	DESCRIPTION

NOT FOR CONSTRUCTION

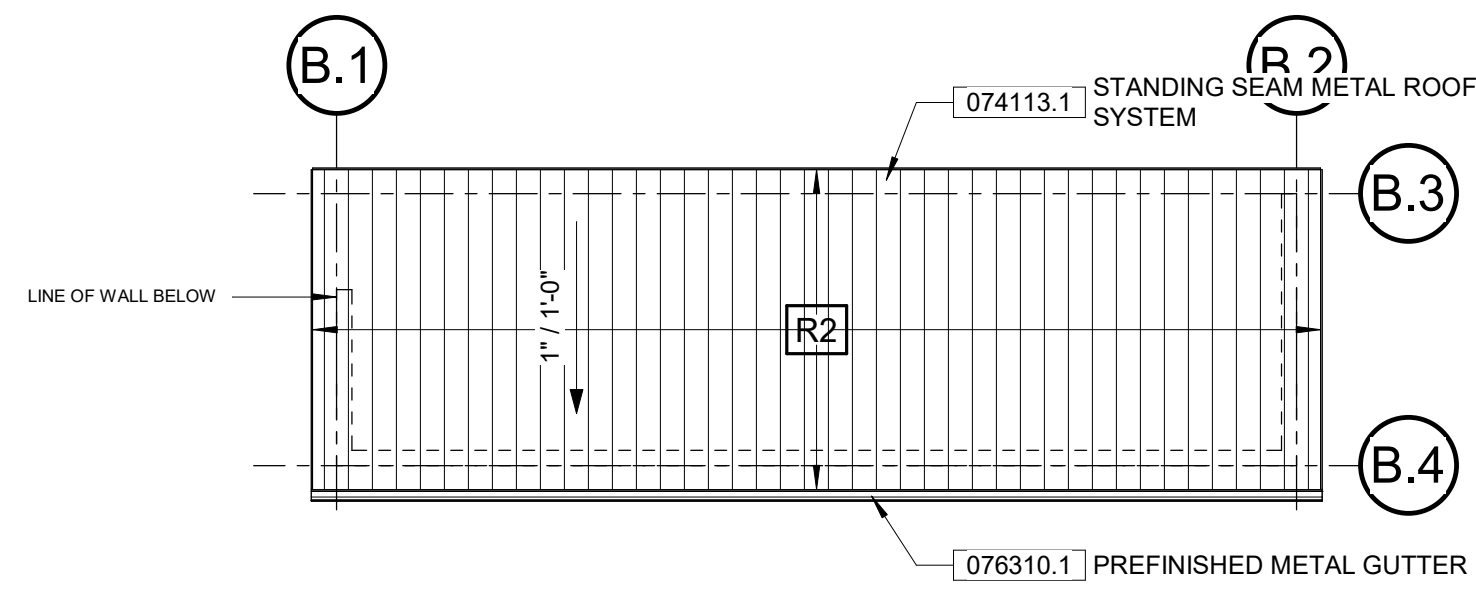
THESE DOCUMENTS HAVE BEEN PREPARED SPECIFICALLY FOR THE ABOVE REFERENCED PROJECT. THEY ARE NOT PERMISSIBLE FOR USE ON OTHER PROJECTS OR AT OTHER LOCATIONS WITHOUT THE EXPRESS WRITTEN APPROVAL AND PARTICIPATION OF SVPA ARCHITECTS INC. REPRODUCTION IS PROHIBITED.

© 2021

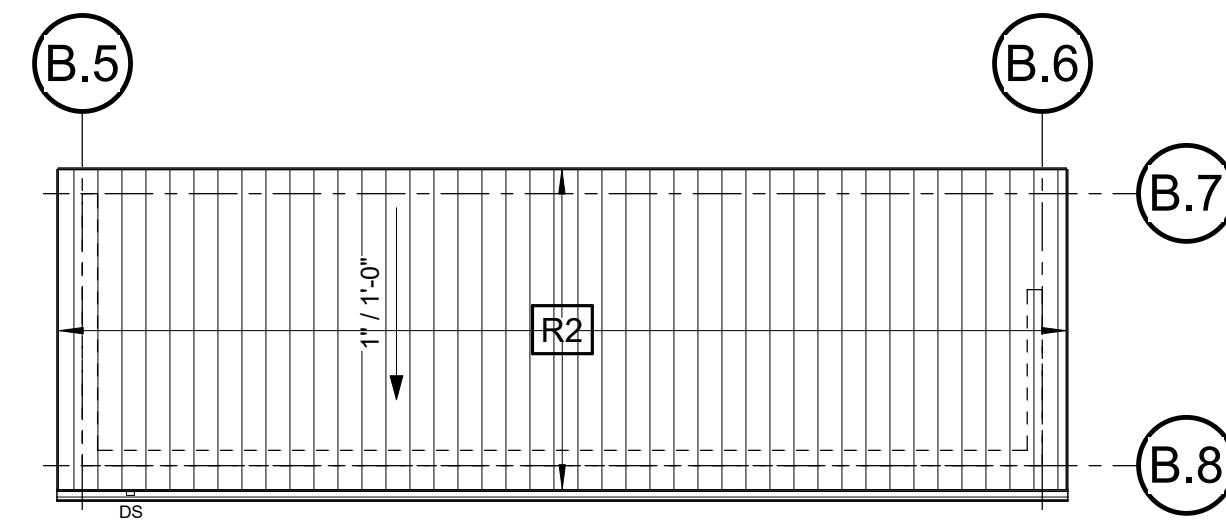
PROJECT NUMBER
22068

3D VIEWS

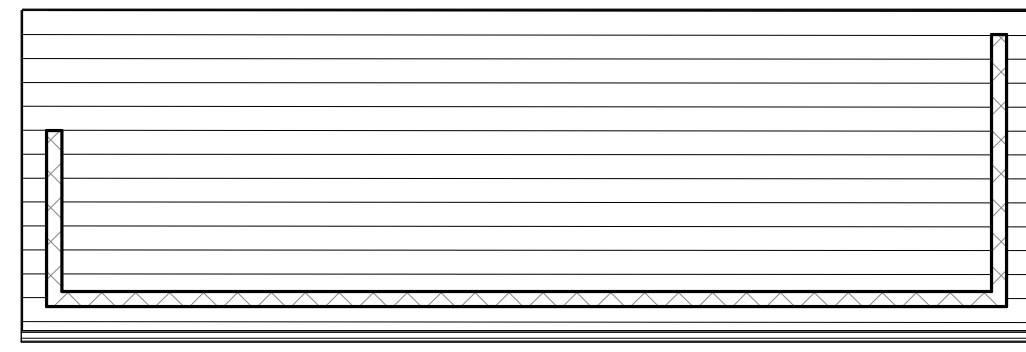
A200



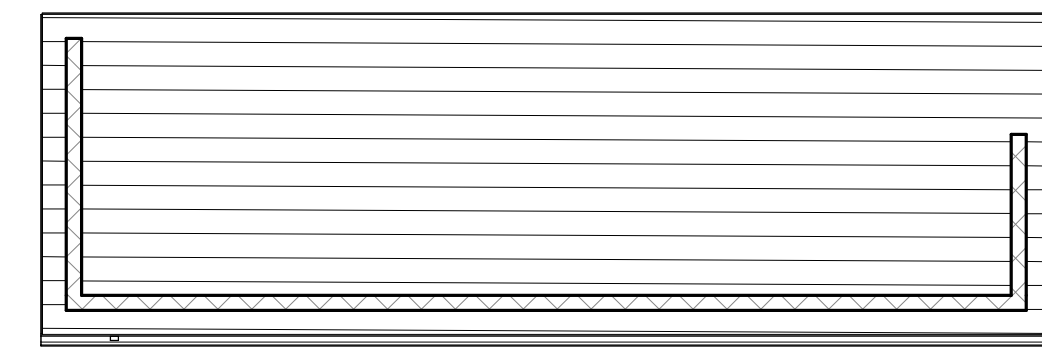
1 VISITOR DUGOUT - ROOF PLAN
SCALE: 1/8" = 1'-0"



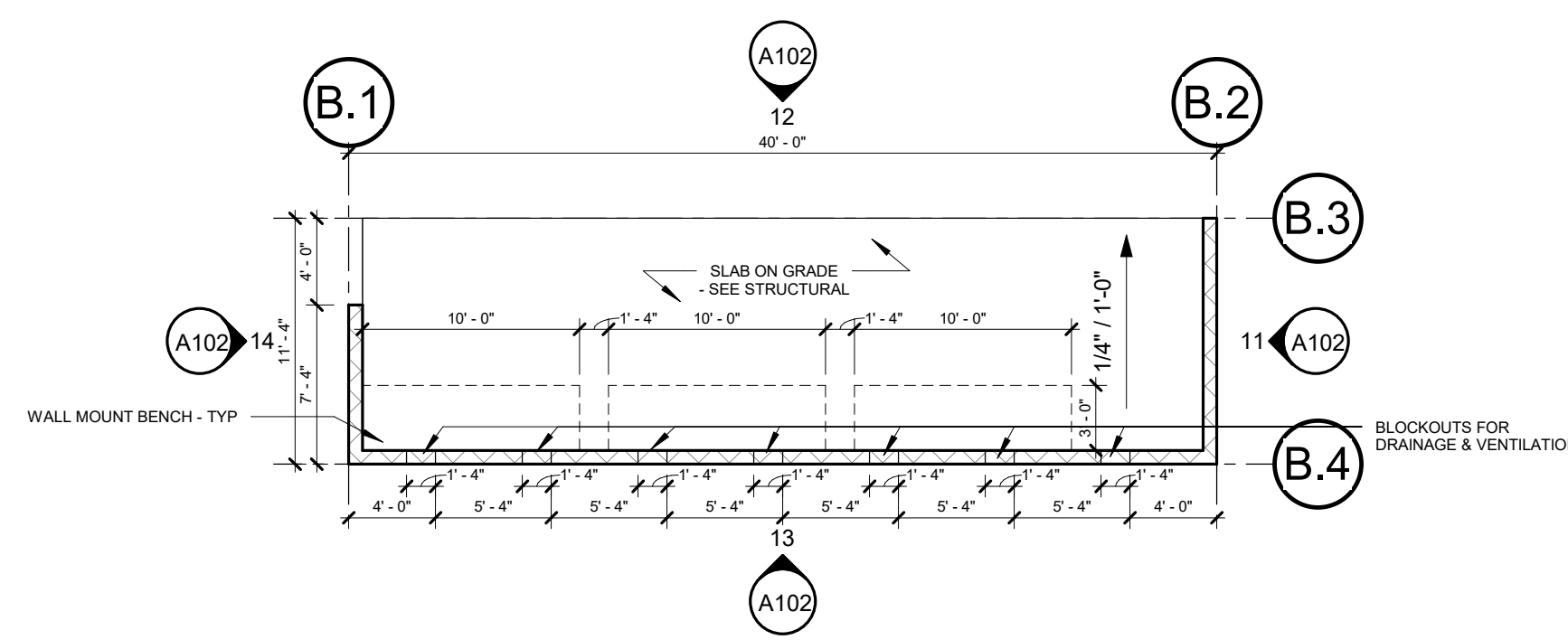
2 HOME DUGOUT - ROOF PLAN
SCALE: 1/8" = 1'-0"



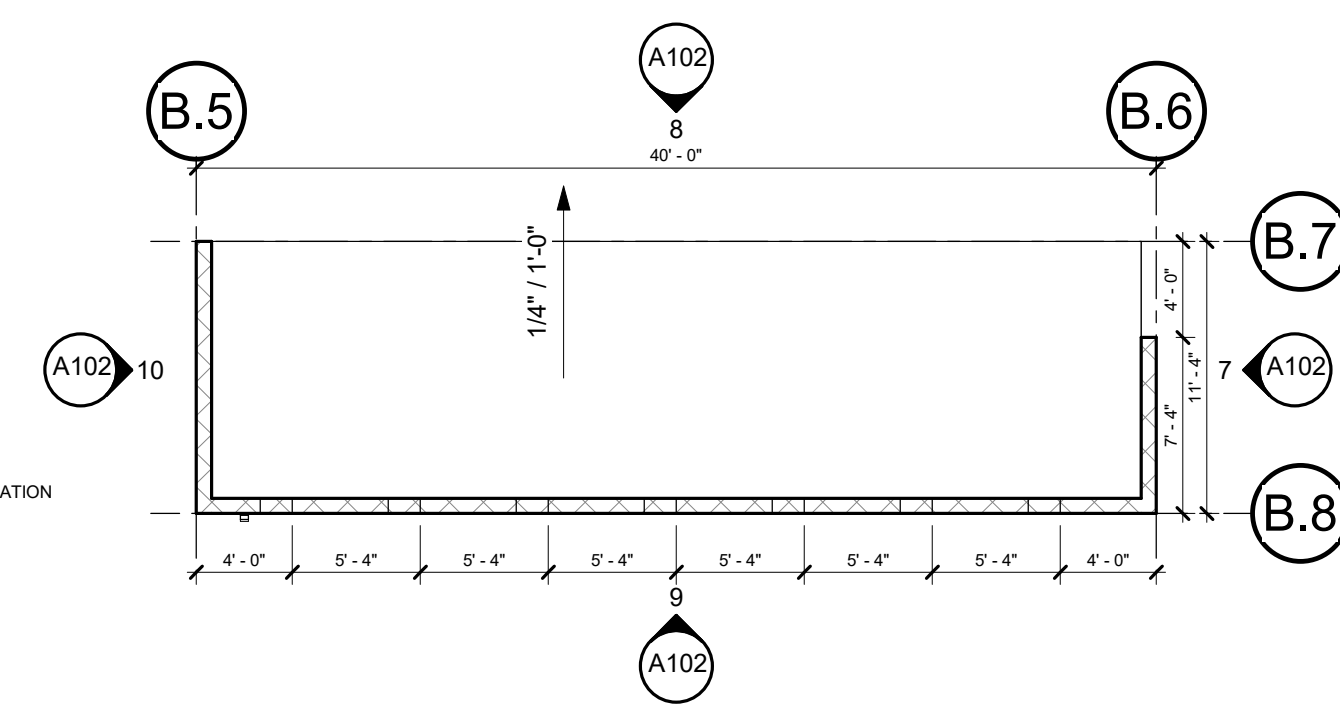
3 VISITOR DUGOUT - REFLECTED CEILING PLAN
SCALE: 1/8" = 1'-0"



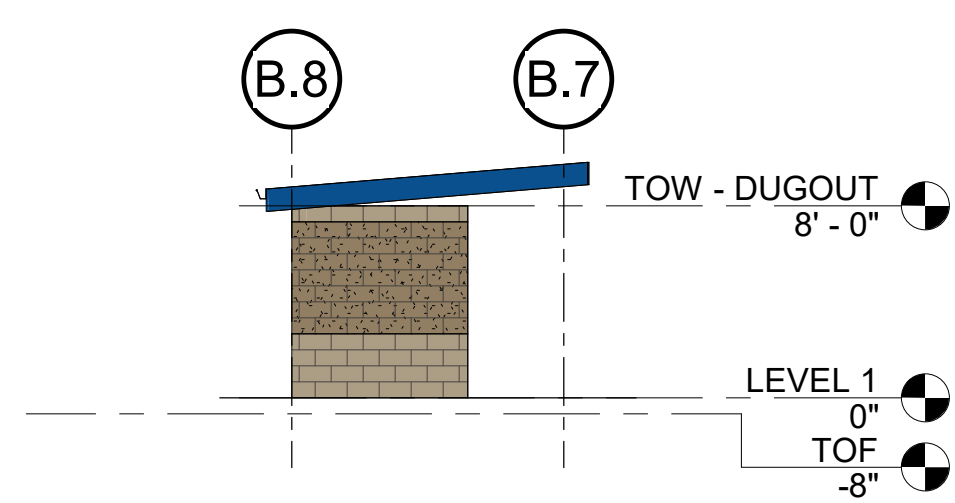
4 HOME DUGOUT - REFLECTED CEILING PLAN
SCALE: 1/8" = 1'-0"



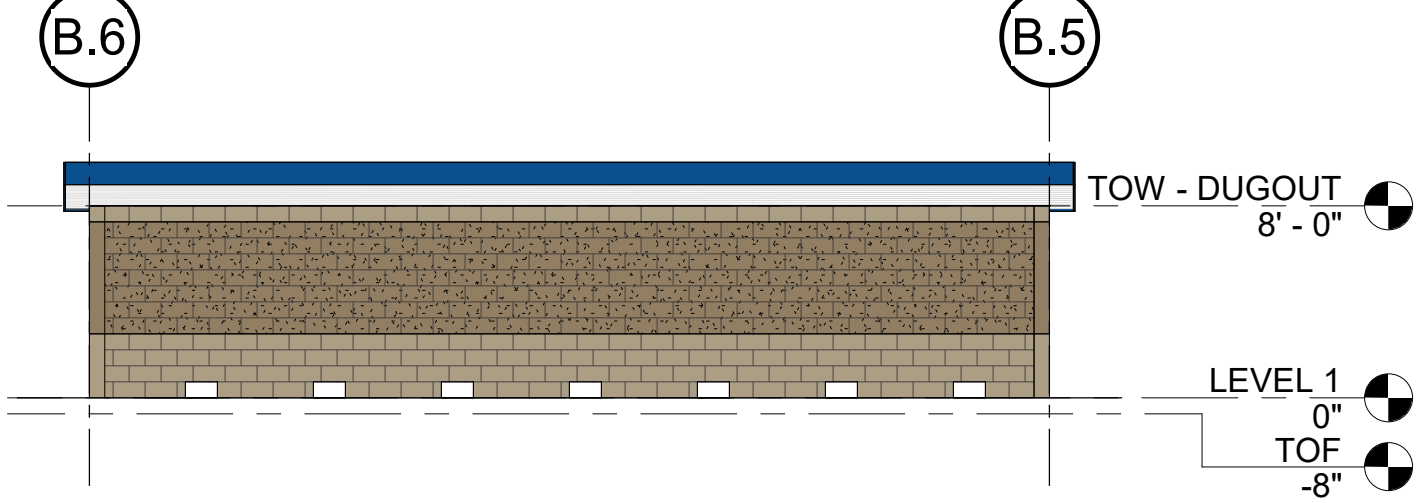
5 VISITOR DUGOUT - FLOOR PLAN
SCALE: 1/8" = 1'-0"



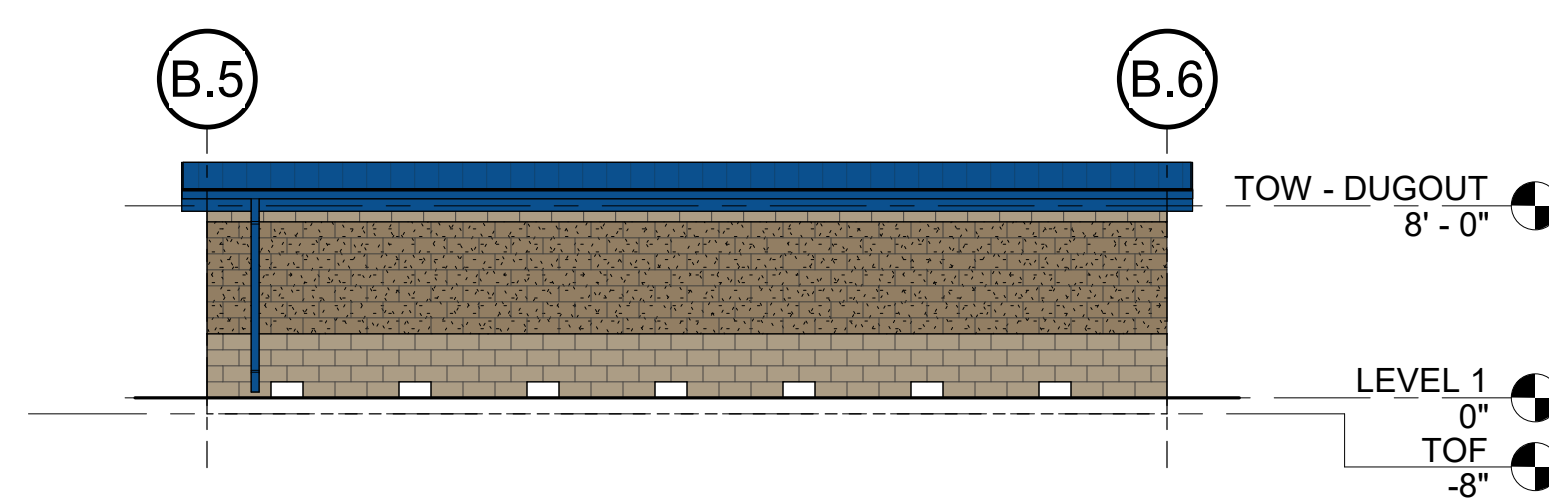
6 HOME DUGOUT - FLOOR PLAN
SCALE: 1/8" = 1'-0"



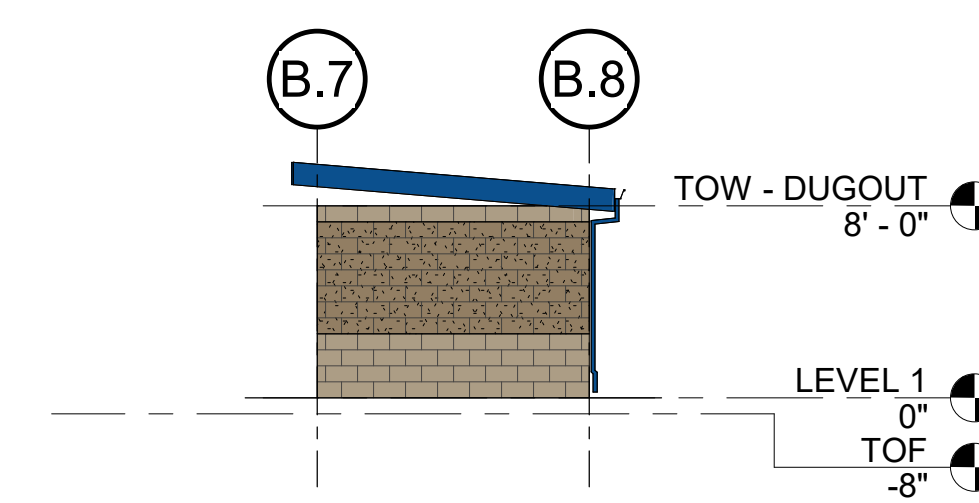
7 HOME DUGOUT - ELEVATION A
SCALE: 1/8" = 1'-0"



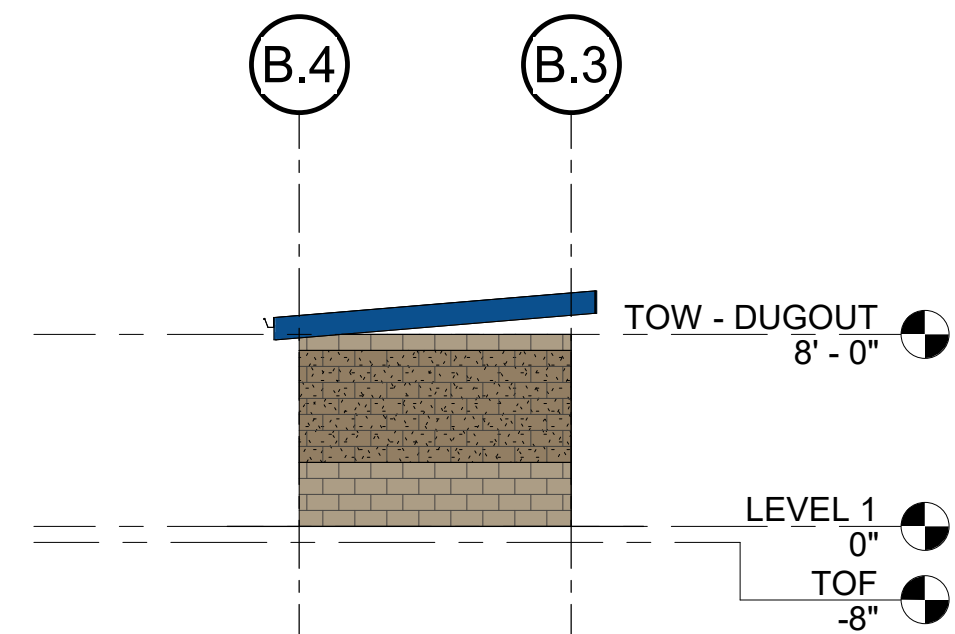
8 HOME DUGOUT - ELEVATION B
SCALE: 1/8" = 1'-0"



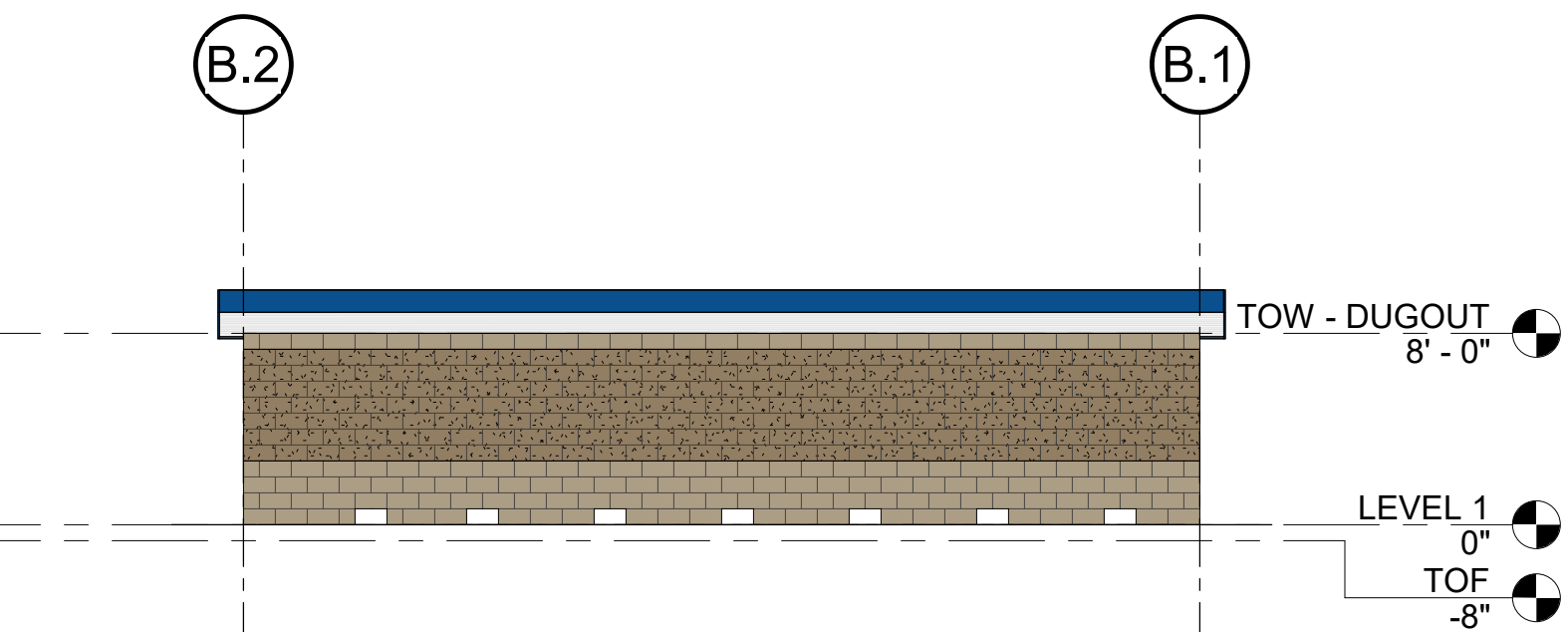
9 HOME DUGOUT - ELEVATION C
SCALE: 1/8" = 1'-0"



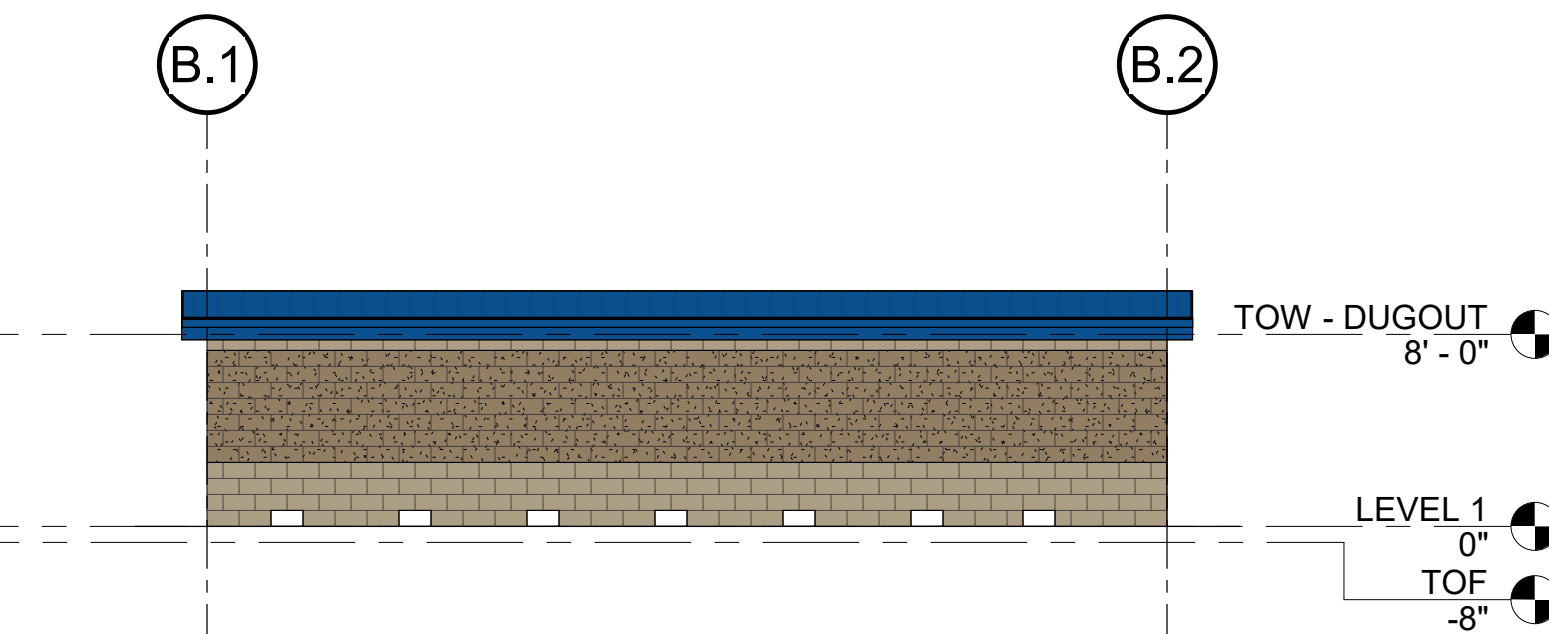
10 HOME DUGOUT - ELEVATION D
SCALE: 1/8" = 1'-0"



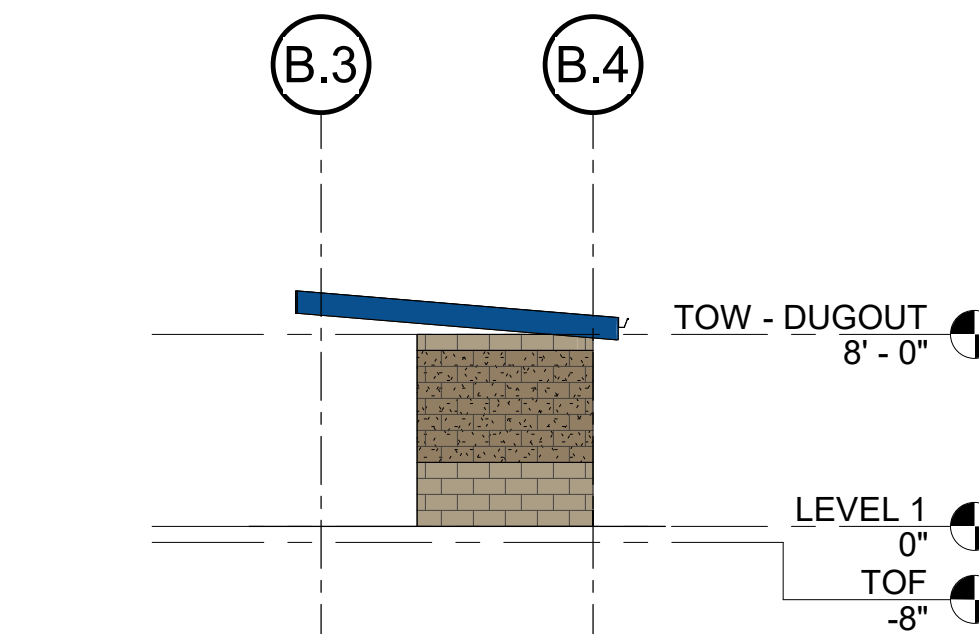
11 VISITOR DUGOUT - ELEVATION A
SCALE: 1/8" = 1'-0"



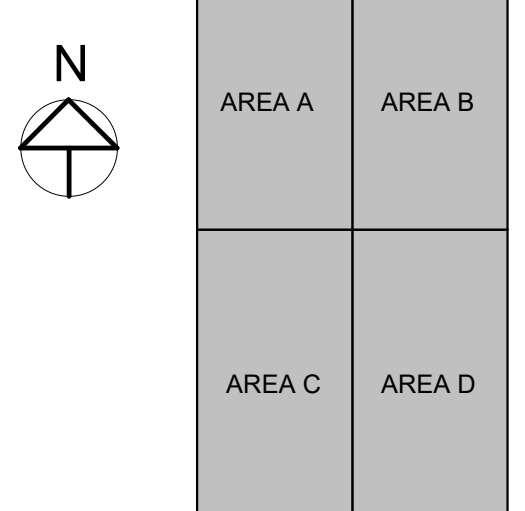
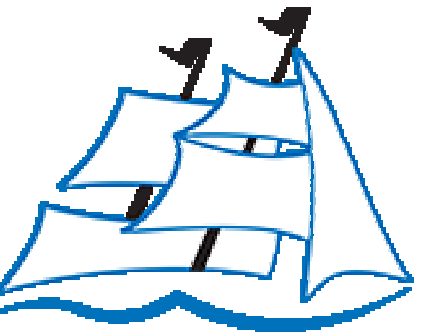
12 VISITOR DUGOUT - ELEVATION B
SCALE: 1/8" = 1'-0"



13 VISITOR DUGOUT - ELEVATION C
SCALE: 1/8" = 1'-0"



14 VISITOR DUGOUT - ELEVATION D
SCALE: 1/8" = 1'-0"



KEY PLAN

**CLEAR CREEK
AMANA
BASEBALL -
SOFTBALL
ATHLETIC
COMPLEX
IMPROVEMENTS**

551 W MARENGO ROAD
TIFFIN, IA 52340

ISSUANCE

100% DESIGN DEVELOPMENT
03/15/2023

REVISIONS

**NOT FOR
CONSTRUCTION**

THESE DOCUMENTS HAVE BEEN PREPARED SPECIFICALLY FOR THE ABOVE REFERENCED PROJECT. THEY ARE NOT PERMISSIBLE FOR USE ON OTHER PROJECTS OR AT OTHER LOCATIONS WITHOUT THE EXPRESS WRITTEN APPROVAL AND PARTICIPATION OF SVP ARCHITECTS INC. REPRODUCTION IS PROHIBITED.

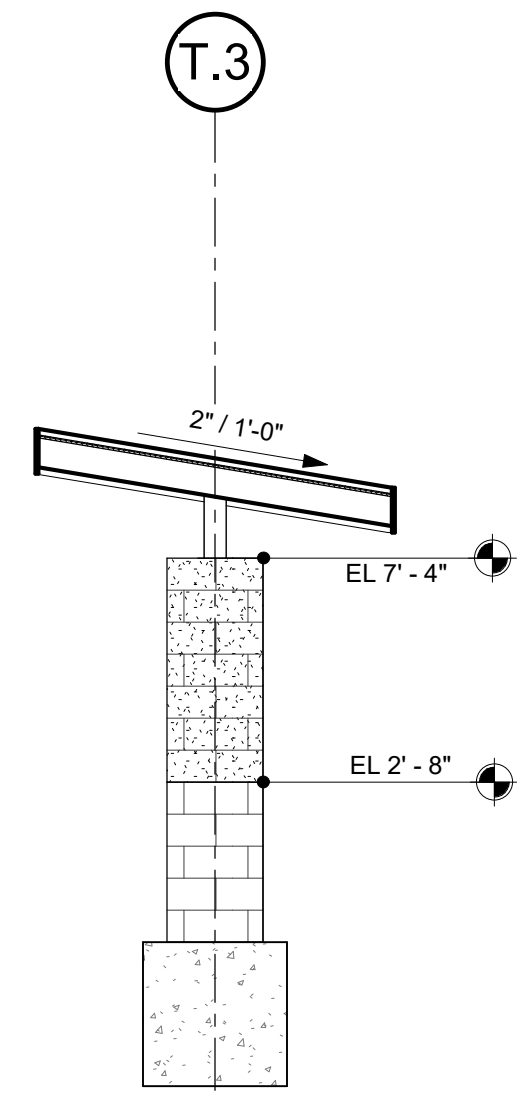
© 2021

PROJECT NUMBER

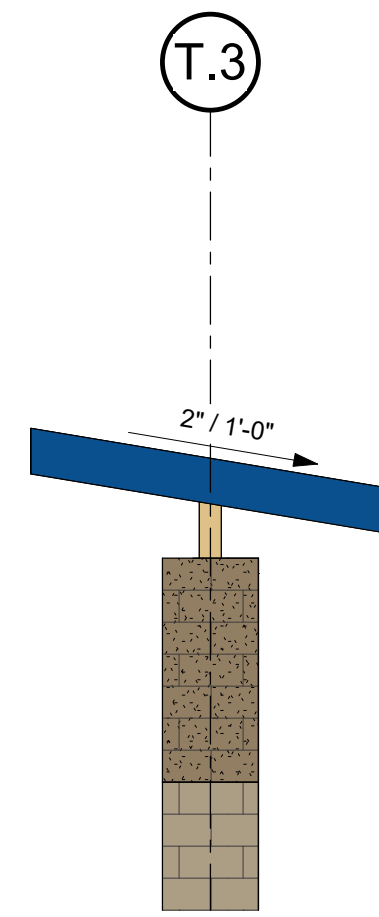
22068

DUGOUTS

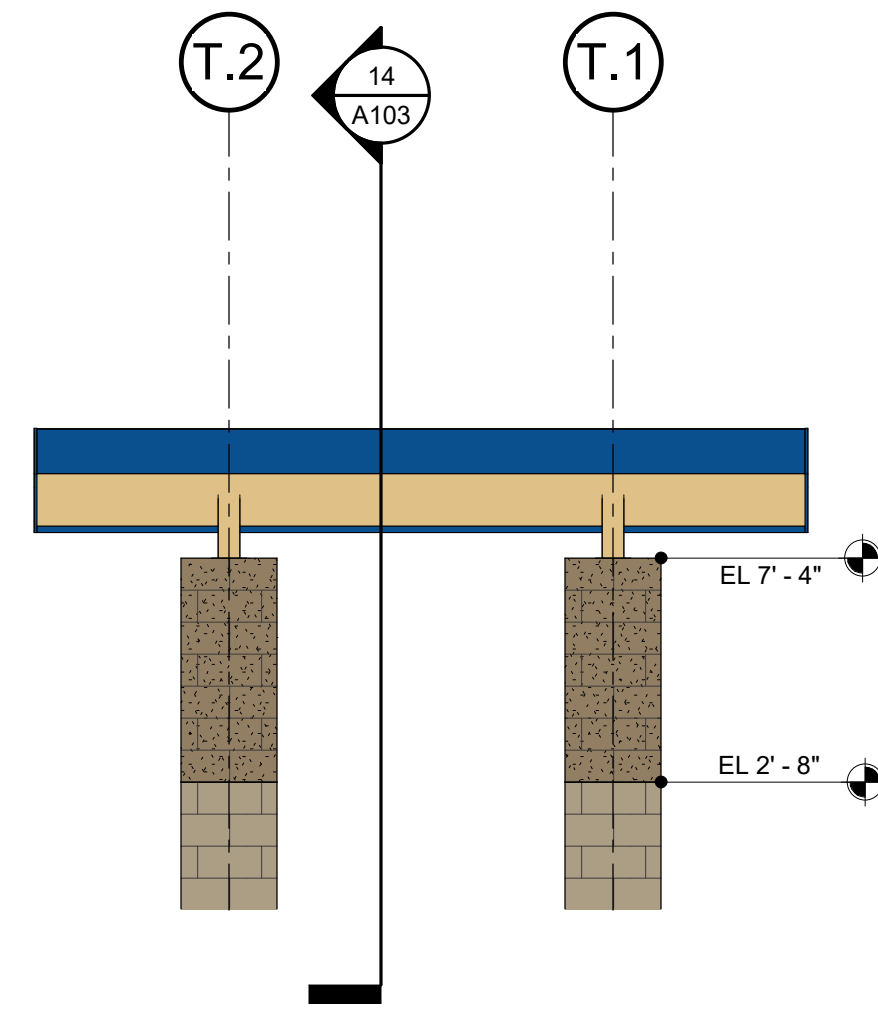
A102



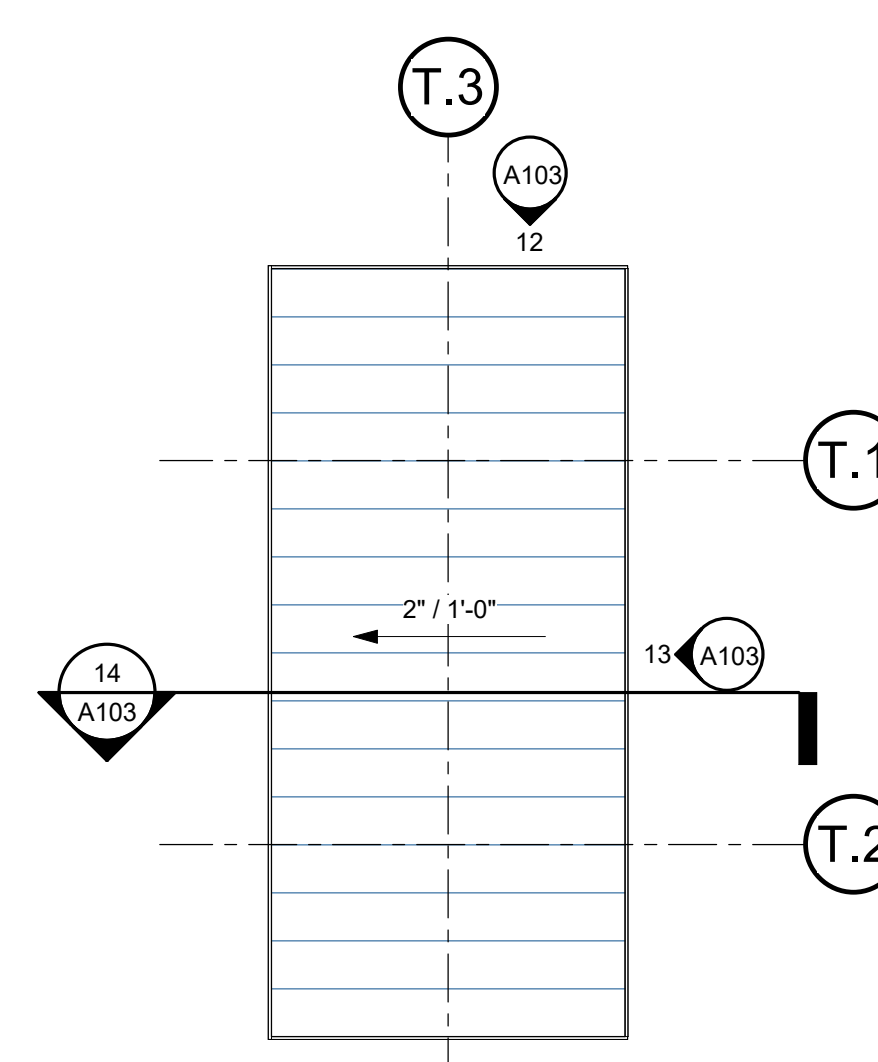
14 TICKET BOOTH SECTION
SCALE: 1/4" = 1'-0"



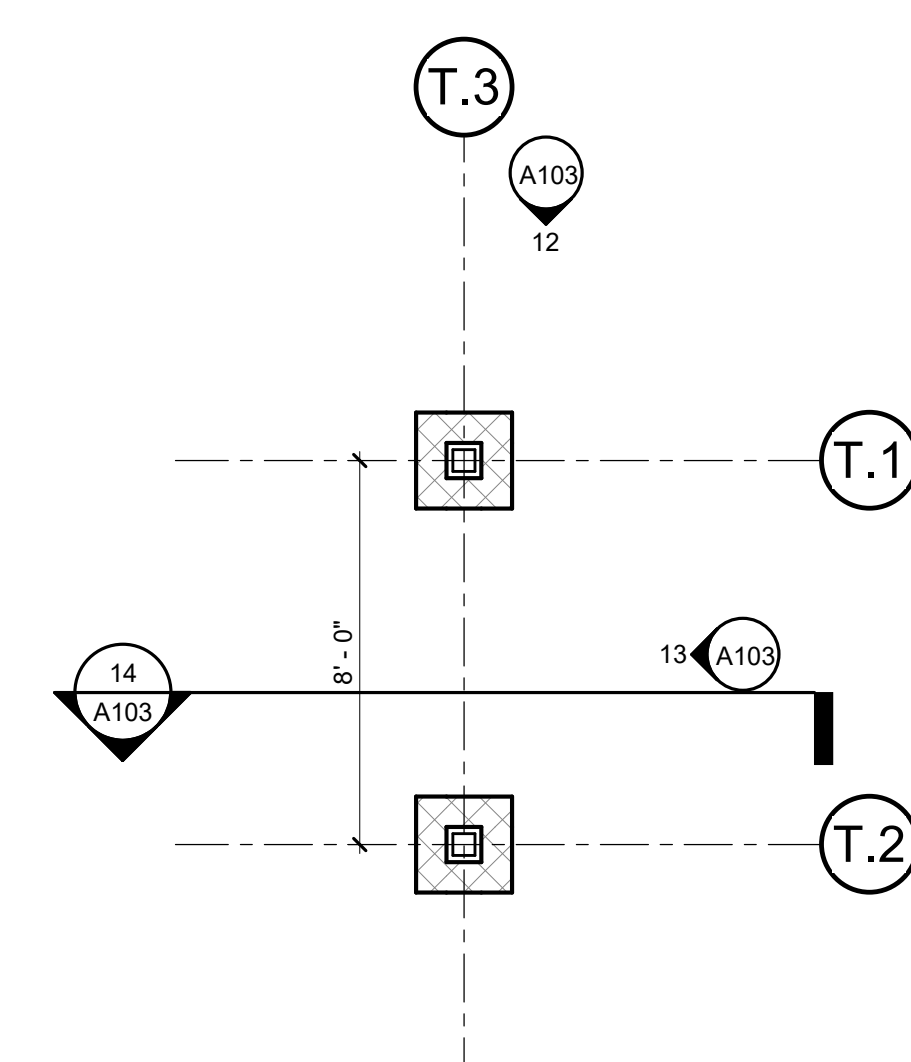
12 TICKET BOOTH NORTH ELEVATION
SCALE: 1/4" = 1'-0"



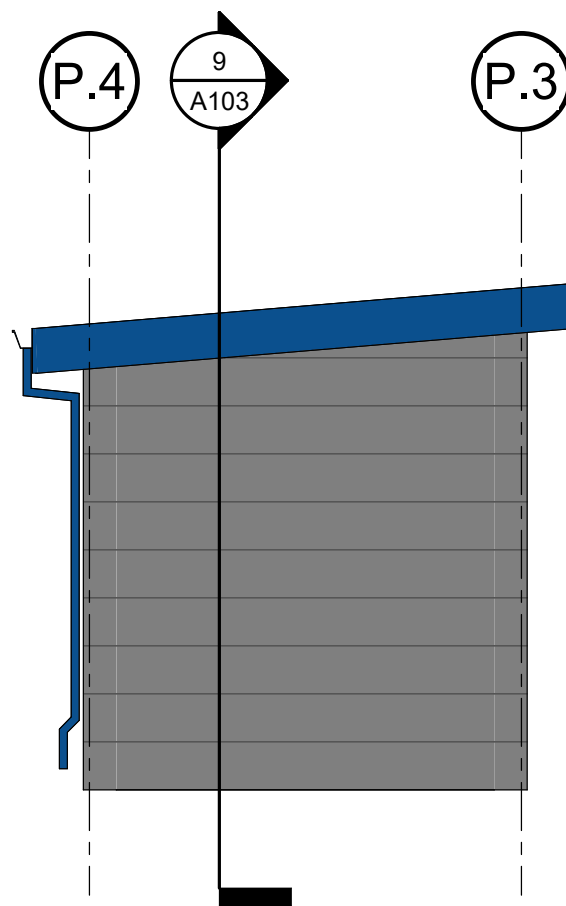
13 TICKET BOOTH EAST ELEVATION
SCALE: 1/4" = 1'-0"



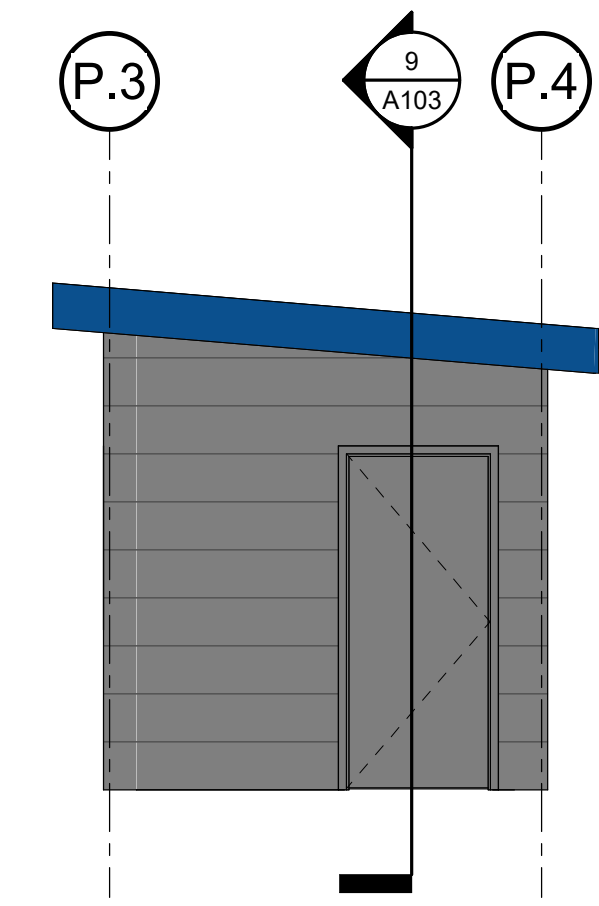
11 TICKET BOOTH ROOF PLAN
SCALE: 1/4" = 1'-0"



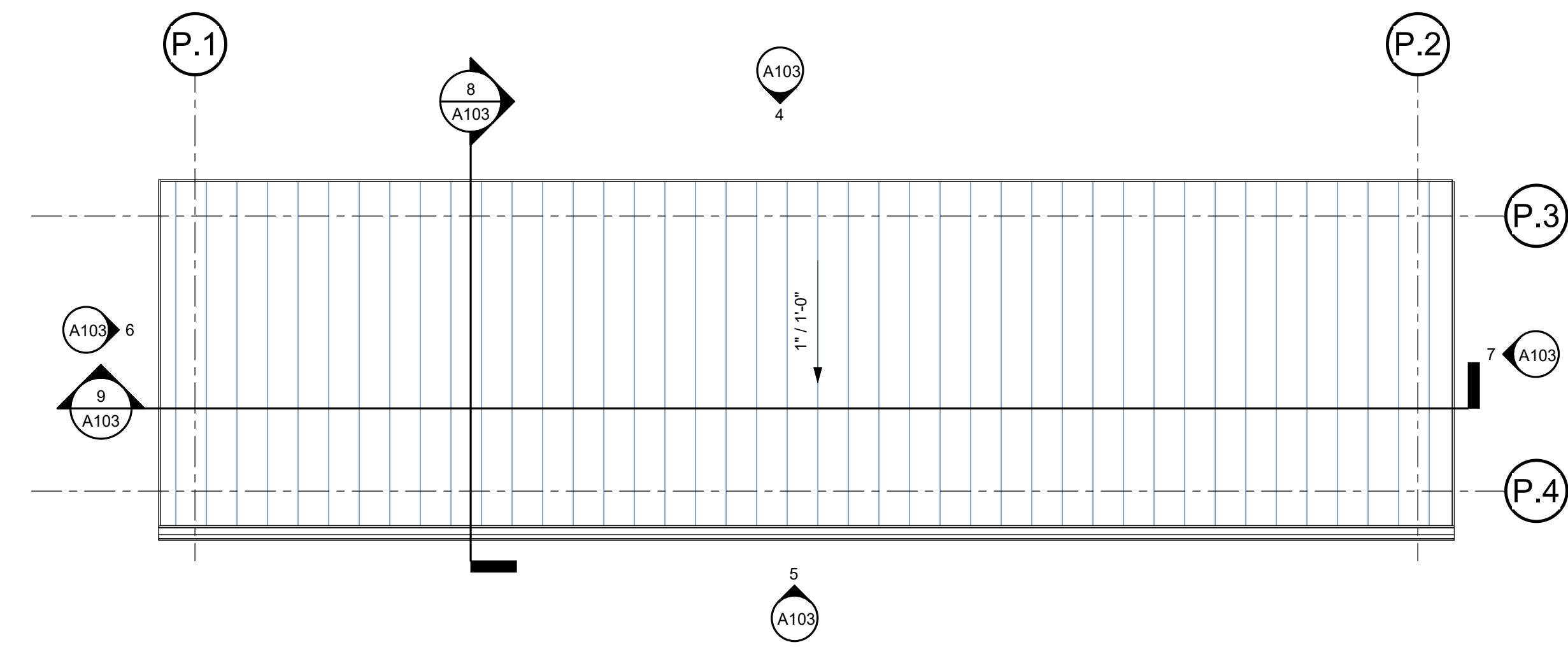
10 TICKET BOOTH PLAN
SCALE: 1/4" = 1'-0"



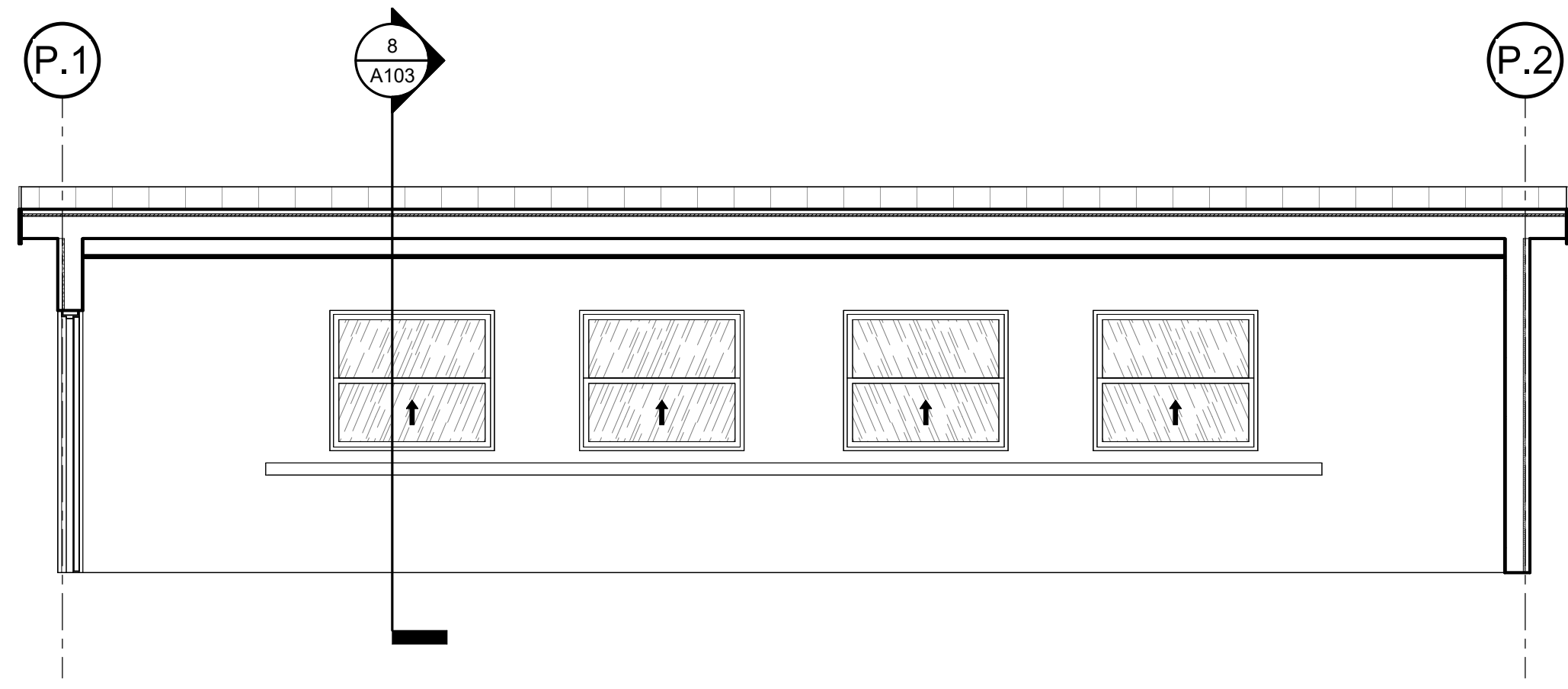
7 PRESSBOX SIDE ELEVATION 1
SCALE: 1/4" = 1'-0"



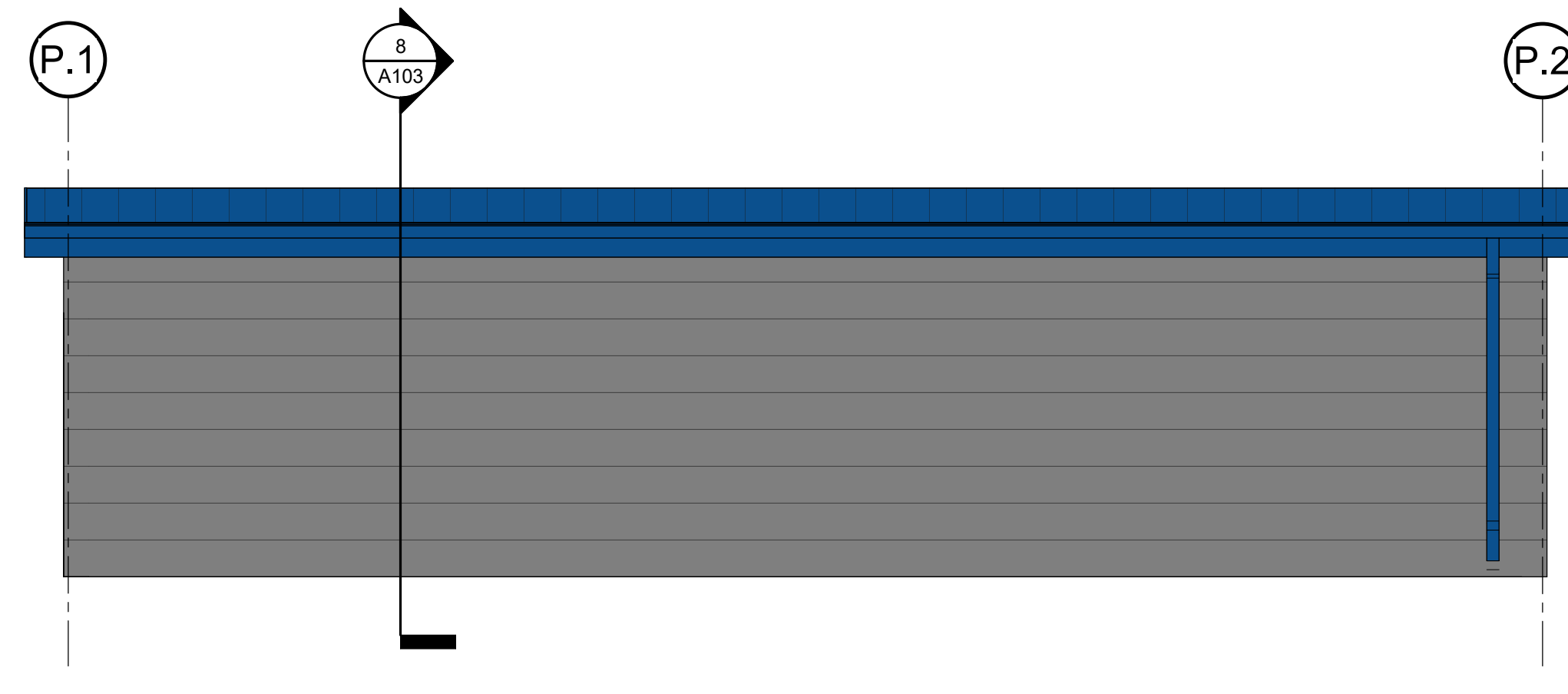
6 PRESSBOX SIDE ELEVATION 2
SCALE: 1/4" = 1'-0"



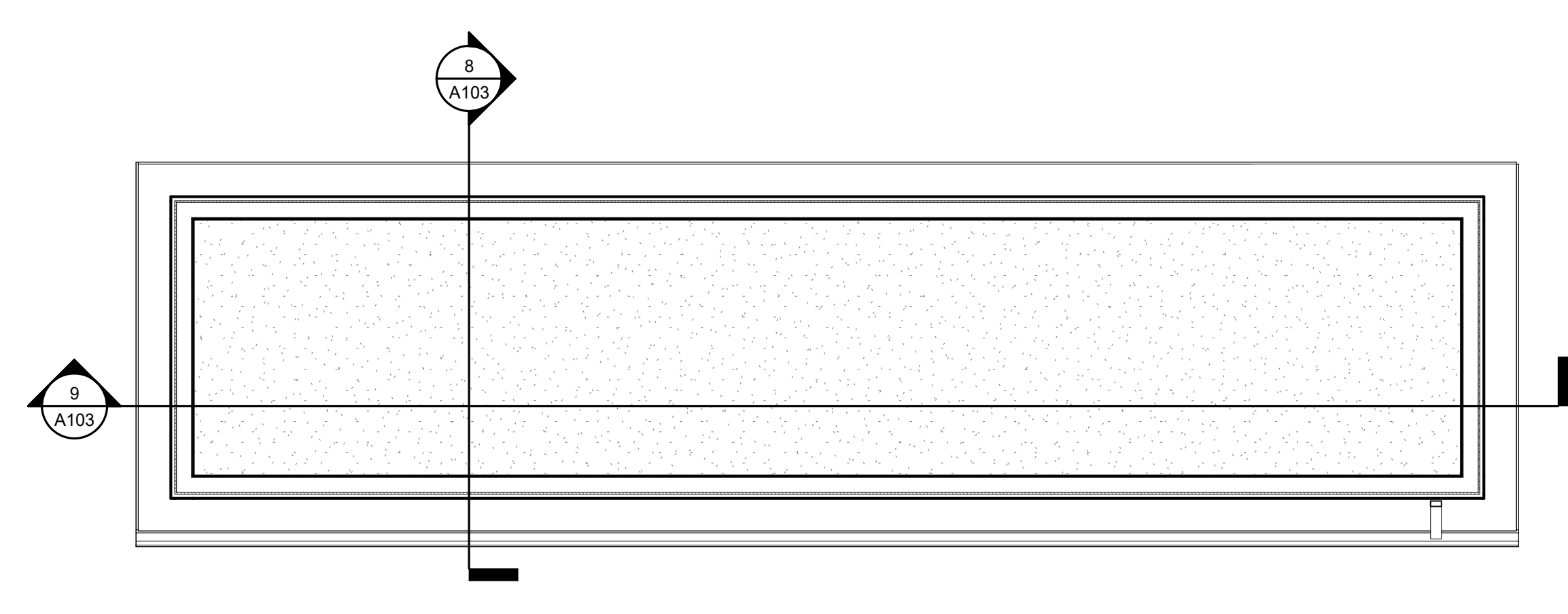
3 PRESS BOX ROOF PLAN
SCALE: 1/4" = 1'-0"



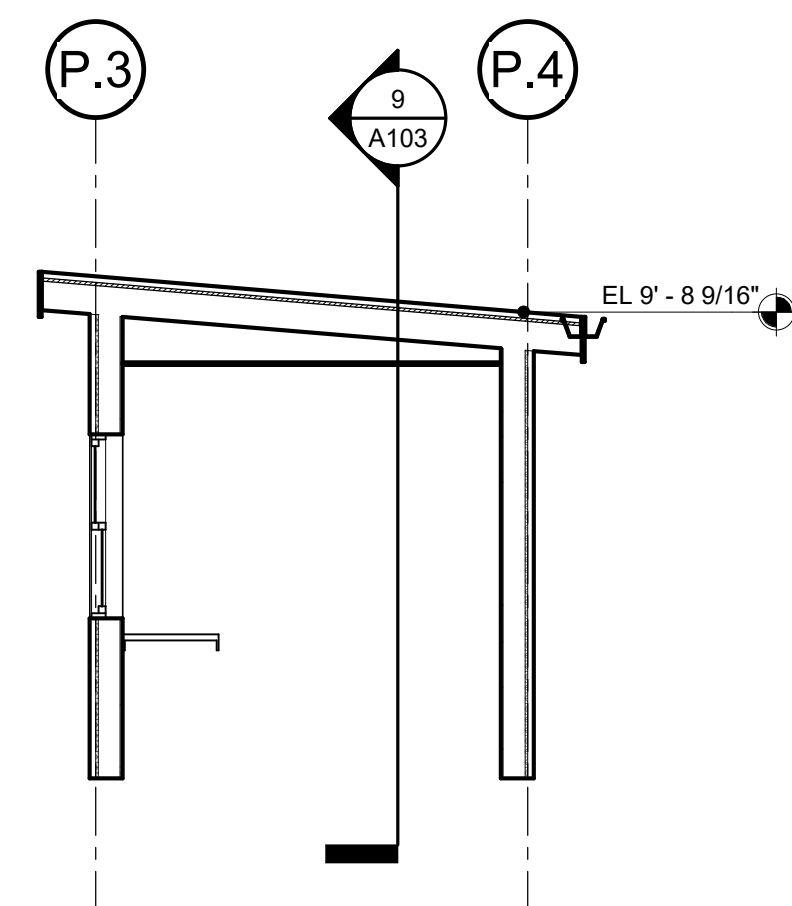
9 PRESSBOX SECTION 2
SCALE: 1/4" = 1'-0"



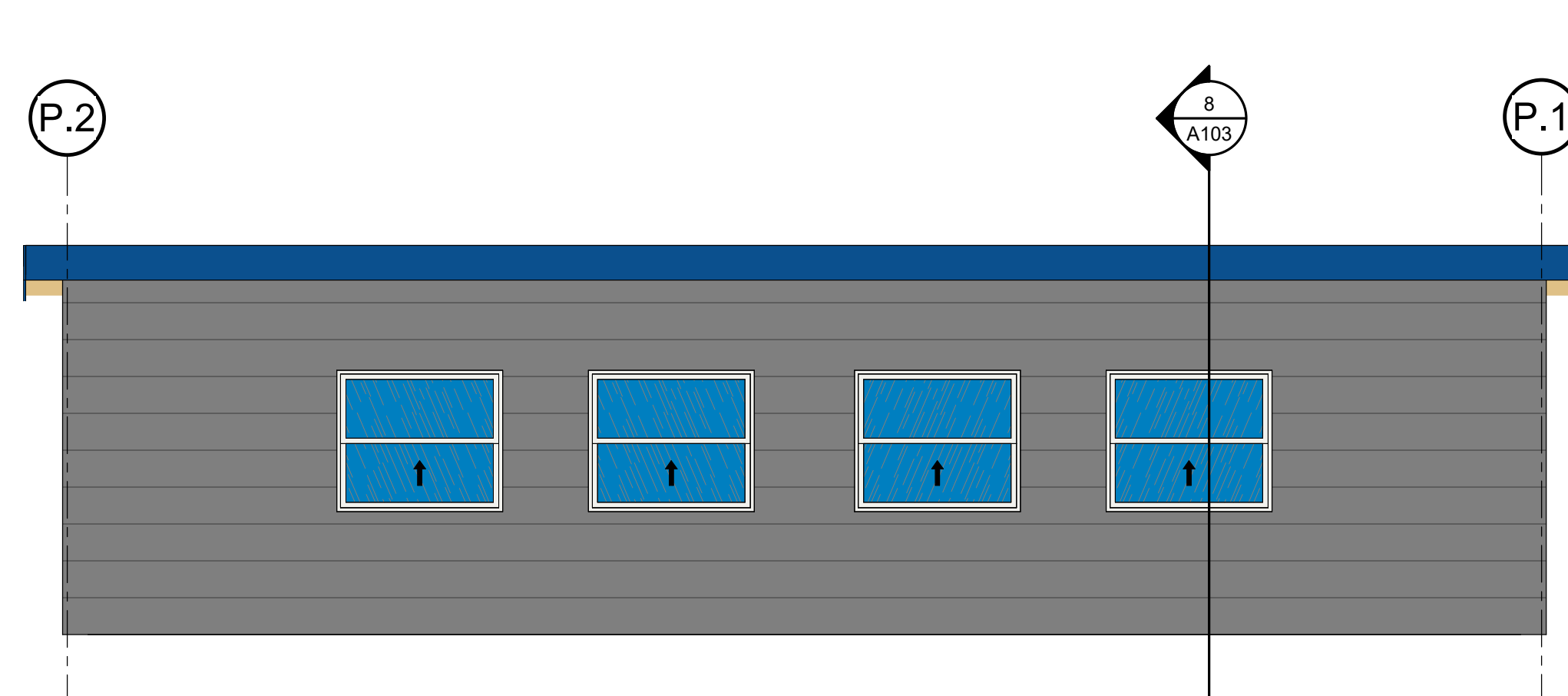
5 PRESSBOX BACK ELEVATION
SCALE: 1/4" = 1'-0"



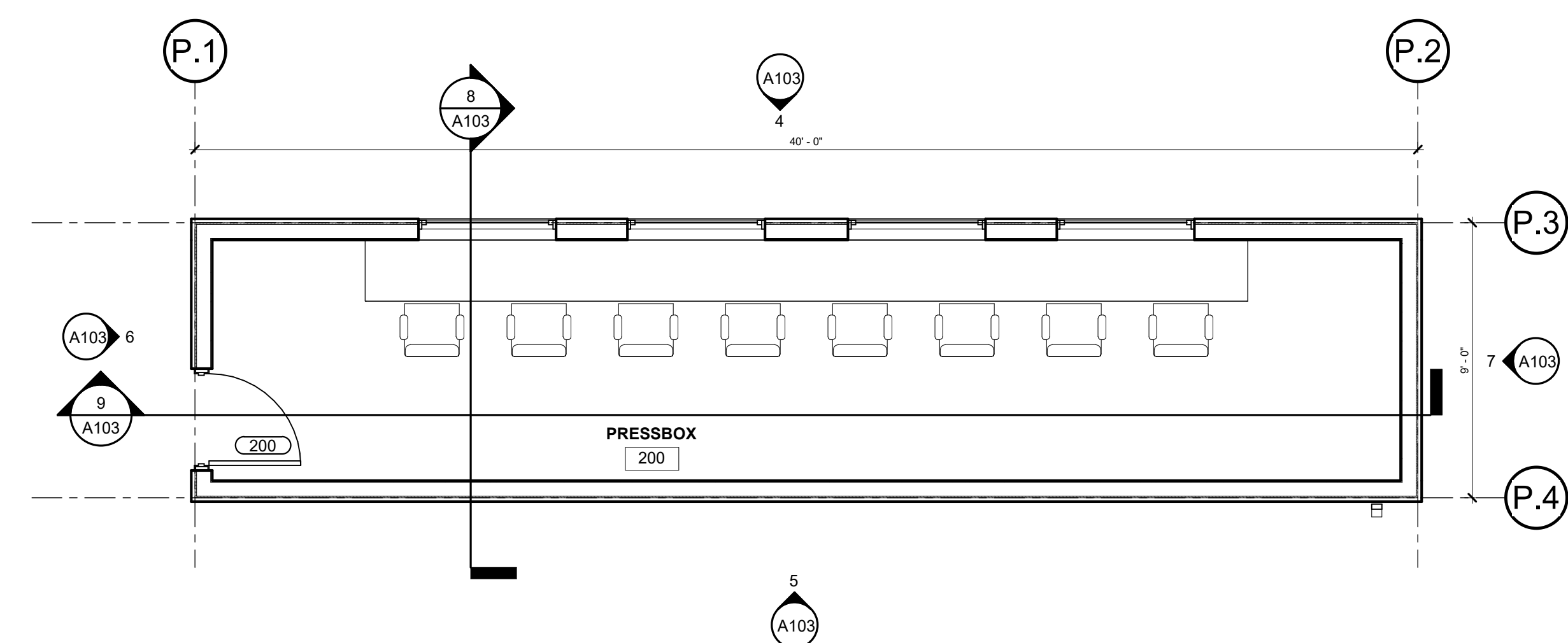
2 PRESSBOX RCP PLAN
SCALE: 1/4" = 1'-0"



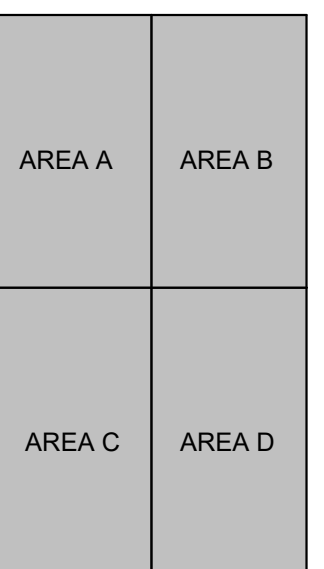
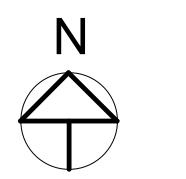
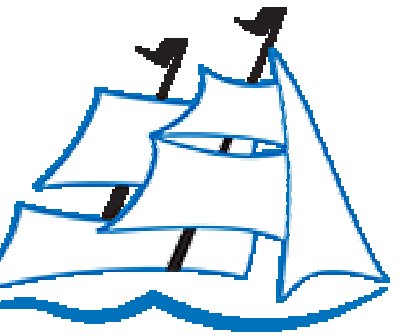
8 PRESSBOX SECTION 1
SCALE: 1/4" = 1'-0"



4 PRESSBOX FRONT ELEVATION
SCALE: 1/4" = 1'-0"



1 PRESSBOX PLAN
SCALE: 1/4" = 1'-0"



KEY PLAN

CLEAR CREEK AMANA BASEBALL - SOFTBALL ATHLETIC COMPLEX IMPROVEMENTS

551 W MARENGO ROAD
TIFFIN, IA 52340

ISSUANCE

100% DESIGN DEVELOPMENT
03/15/2023

REVISIONS

NOT FOR INSTRUCTION

THESE DOCUMENTS HAVE BEEN PREPARED SPECIFICALLY FOR THE ABOVE REFERENCED PROJECT. THEY ARE NOT PERMISSIBLE FOR USE ON OTHER PROJECTS OR IN OTHER LOCATIONS WITHOUT THE EXPRESS WRITTEN APPROVAL AND PARTICIPATION OF SVP ARCHITECTS INC. REPRODUCTION IS PROHIBITED.

© 2021
PROJECT NUMBER
22068
PRESSBOX/TICKET BOOTH
A103



www.svpa-architects.com
Phone 515.327.5990

1466 28th Street, Suite 200
West Des Moines, Iowa 50266

Project: P22068 Clear Creek Amana CSD **Baseball & Softball Phasing/Budget** 3/8/2023

Design Development – Opinion of Probable Construction Cost: \$4,200,000

Work Sequence 1: 2023 Scope of Work

- 1) Start Date: **June 19, 2023**
- 2) Substantial Completion Date: **December 8, 2023**
- 3) Preliminary Opinion of Construction Cost: **\$1,350,000**
- 4) Scope of Work:
 - a) Shotput & Discuss relocation (to west area)
 - b) Mass Grading & Site Utilities (center area)
 - c) Existing Baseball (practice) Grading & Storm Water Improvements (east area)
 - d) Restrooms /Concessions /Storage Building
 - e) Ticket & Entry Gate Structure
 - f) Owner Provided Work - Relocate Practice Fields (to west area)

Work Sequence 2: 2024 Scope of Work

- 1) Start Date: **April 15, 2024**
- 2) Substantial Completion Date: **September 20, 2024**
- 3) Preliminary Opinion of Construction Cost: **\$2,850,000**
- 4) Scope of Work:
 - a. Competition Baseball Field: grass outfield, synthetic turf infield, bleachers (400) & press box, LED field lighting, scoreboard & sound system, dugouts, fencing, backstop, and batting tunnels
 - b. Competition Softball Field: grass outfield, synthetic turf infield, bleachers (400) & press box, LED field lighting, scoreboard & sound system, dugouts, fencing, backstop, and batting tunnels
 - c. Practice Softball Field: grass outfield, skinned infield, fencing, and backstop.
 - d. Sidewalks, Hardscape, Fine Grading and Landscaping
 - e. Competition Complex Fencing

Master Plan / Future Work (N.I.C.)

- 1) Existing Baseball Field (practice) Improvements: (new bleachers, press box, dugouts, bullpens, batting tunnels, backstop, ticket building, scoreboard, sound system etc..)
- 2) New Softball Field (practice) Improvements for competition: (bleachers, press box, dugouts, bullpens, batting tunnels, field lighting, scoreboard, sound system etc..)
- 3) Indoor Practice and Training Facility
- 4) Tennis Courts (8)
- 5) High School or Middle School parking expansion and access drive
- 6) Middle School Football Field / Track / Support Building Improvements